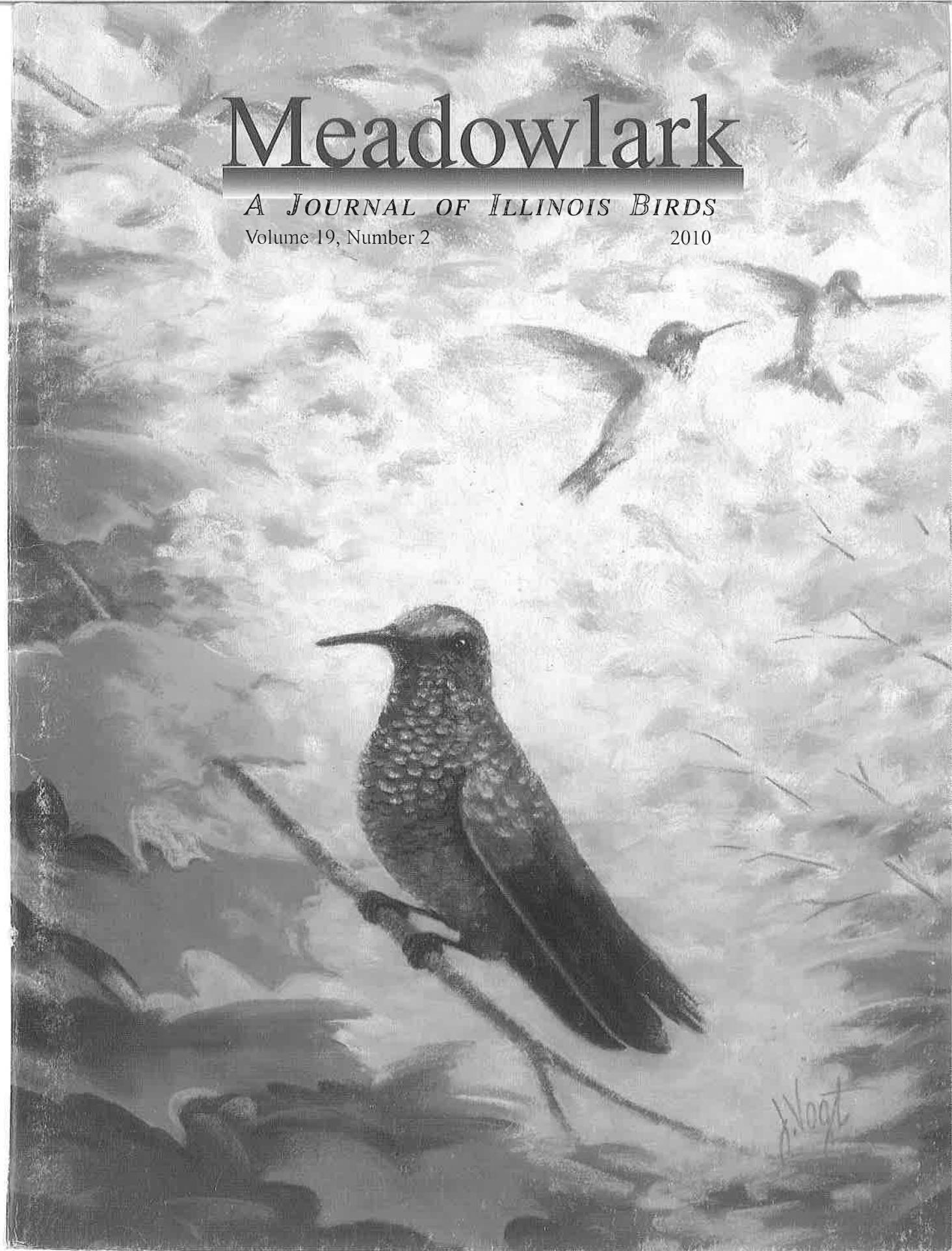


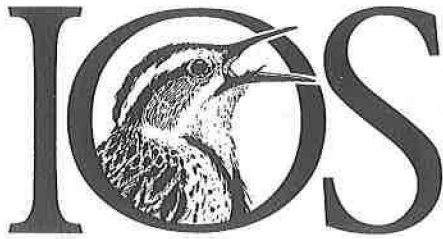
Meadowlark

A JOURNAL OF ILLINOIS BIRDS

Volume 19, Number 2

2010





ILLINOIS ORNITHOLOGICAL SOCIETY

President's Message

Knowing about Illinois' current financial difficulties, it is disheartening to contemplate how much our state's wildlife conservation and natural resources management activities are being impacted by significant budget cuts. If some politicians have their way, more, even deeper cuts will occur. Short term impacts often produce dramatic headlines: State Park To Be Closed; No Funds Available! Occasionally, these draconian and unpopular decisions are reversed because of the attendant publicity and immediate public outcry.

But the real issue may be the more subtle, longer term budgetary constraints being imposed today on the Illinois Department of Natural Resources and the Illinois Natural History Survey. Capable, seasoned and dedicated wildlife professionals are leaving, sometimes voluntarily, sometimes not. Even as staffing levels shrink, money for basic operations has dried up, leading to situations where the professionals and the volunteers who work at their sides don't have enough money to provide fuel for vehicles, or herbicides to suppress non-native, invasive plants, as they struggle to maintain and enhance important habitats on a landscape scale. Coupled with that, there's no money available for large scale habitat acquisitions. Illinois ranks very low nationally in the amount of public land set aside for wildlife. We should be doing more to reverse that statistic, but the budget crunch makes that nearly impossible.

You may ask what does that have to do with IOS? A lot, I think! The Illinois Audubon Society, The Nature Conservancy, Chicago Wilderness and other organizations have picked up some of the slack. As an all volunteer organization, we don't have the financial resources of these conservation powerhouses. But we do have an impact, through the IOS Grants Program that you help support.

Each year we send out requests to universities and other public entities around the state, offering \$1,000 grants for bird related research. We always receive more worthwhile proposals than we have funds to provide, so a team of IOS members who are professional biologists review each proposal, and rank them on the quality and importance of the work. In 2010, we were able to fund six grants, thanks to you, our members, and thanks to the local birding clubs who reached into their pocket to provide support to the program. This year, IOS is giving \$6,000 toward grants, the most in our organization's history.

In this issue of *Meadowlark*, you can read in detail about those six projects. While the monies IOS provides are not large, they are significant. Why? Because we send a clear message along with the money. That message: IOS represents a constituency that cares about the future of birds in Illinois, and we will do what we can, going forward, to support the future ornithologists and wildlife biologists who care as much as we do about birds and their habitats here in Illinois.

I ask each of you, squeeze out a few extra bucks on top of your membership dues, so IOS can again increase our level of funding in 2011. Let me close by quoting Ben O'Neal, one of the 2010 grant recipients, now an Assistant Professor of Biology at Franklin College, right across the border in southeast Indiana.

"It has been a great joy being able to teach in the field I love so dearly." One of the great things about grants from IOS and others is that "it allows me to continue working with the American Golden-Plovers in Illinois and Indiana. We very much appreciate all IOS does!"

— Robert Fisher, President

Publisher

Illinois Ornithological Society

Robert Fisher, President

Sheryl DeVore, Chief Editor

Marj Lundy, Vice-President

Alex Meloy, Treasurer

Barbara Williams,
Membership Secretary

Board of Directors

Steven D. Bailey

Joan Bruchman

Scott Cohrs

Jon Duerr

Robert Fisher

Brian Herriott

Marj Lundy

Jeffery Walk

Barbara Williams

Associate Editors

Steven D. Bailey

Jeffery Walk

Staff Illustrators

Peter Olson

Michael L. P. Retter

Jenny Vogt

Barbara Williams

Pre-Press Production

Kathy Ade

TKAde@aol.com

Printing

CityWide Printing

Des Plaines, Illinois

Letter from the Editor

You may have noticed the gorgeous color drawing on the cover of this issue, as well as the equally stunning color photograph on the back cover. Though it's not economically feasible to print the entire issue in color, we decided we can occasionally use color to showcase our talented artists and photographers and give you something a little prettier to admire while reading *Meadowlark*.

This is an experiment, one we hope you'll support. In a future issue, we might highlight color photos on a two-page spread when it seems warranted. If someone takes a stunning photo of a Varied Thrush, for example, wouldn't it be great to see the bird in full, living color? The cost of color in magazines has decreased, so we're taking advantage of that, at least for the time being.

Our artist, Jenny Vogt, has graciously offered to sell, for a limited time only, prints of the Green Violetear and donate some of the profits to IOS. Please see the information below in "About Our Cover" for information on ordering prints. The deadline is Feb. 19, the date of the Annual Gull Frolic. We hope to see you there at this wonderful day of learning, camaraderie, birding and great food.

As well as having volunteers who can create art and take photographs, IOS also has talented cooks, who provide gull stew and other fabulous meals at the frolic. We also have got talented volunteer writers, editors, advisers, Web masters and more.

Birders are truly multi-talented – especially those who belong to IOS! We hope you enjoy Jenny Vogt's and Brian Tang's talents in this issue.

We promise to be judicious in our choices of using color, and welcome your input and thoughts on this new venture.

Have a wonderful holiday season, and don't forget that IOS memberships make great gifts.

Sheryl DeVore

MEADOWLARK

A JOURNAL OF ILLINOIS BIRDS

Volume 19, Number 2 - 2010

ISSN 1065-2043

Visit Our Website at: <http://www.illinoisbirds.org>

Articles

Effects of linear woody vegetation removal on grassland birds at Bartel Grasslands 46

– James R. Herkert

Ruby-throated Hummingbird feeds on a pear 51

– John G. Palis

IOS awards six \$1,000 bird research grants 52

– Robert Fisher

Departments

Sixteenth Report of the Illinois Ornithological Records Committee 56

– Douglas F. Stotz

Field Notes: The 2009 fall migration 62

– Douglas F. Stotz

About Our Cover:

Our cover art is Jenny Vogt's interpretation of the state's first Green Violetear that visited a St. Clair County feeder in August 2009.

Limited edition prints are available for a short time for \$38, plus \$10, packaging and postage. To receive the special price, order by Feb. 19, 2011, the date of the Gull Frolic. Visit www.illinoisbirds.org. Click on the picture of the hummingbird art. This will take you to a secure check out where you can purchase your own signed and numbered archive-quality, limited edition print. Your purchase supports IOS.

Copyright © by the Illinois Ornithological Society. No part of this journal may be reproduced without the written permission of IOS and the chief editor, except brief passages of a paragraph or less in which attribution is made to the journal and author.

Effects of linear woody vegetation removal on grassland birds at Bartel Grasslands

By James R. Herkert

ABSTRACT: Woody edges, including linear tree rows, are known to negatively impact grassland bird populations due to many species avoidance of these features as well as their negative impacts on breeding bird nesting success. Because of these effects, management guidance for grassland birds often includes recommendations to control or remove woody vegetation. Although widely recommended, data regarding grassland bird response to woody vegetation removal are presently scarce. I report on a study that documents breeding bird response to the removal of over 4-km of linear tree rows from a 150 ha grassland site in northeastern Illinois – the Bartel Grasslands. Tree line removal appeared to have a relatively strong impact on breeding bird populations at the site. Populations of several grassland bird species, especially Bobolink, Savannah Sparrow, and Grasshopper Sparrow showed an immediate increase the first year



following tree removal at the site. Bobolink numbers increased by 24% at the site, Savannah Sparrow numbers increased by 47%, and Grasshopper Sparrow numbers were three times more abundant at the site in the initial year following tree removal. For all three of these species, population increases were greatest in the portions of

Savannah Sparrow numbers increased after removal of woody vegetation at Bartel Grassland.

This photo of a Savannah Sparrow was taken at Montrose, Cook County 23 September 2010 by Steve Spitzer.

the site where the tree lines formerly occurred. Tree removal also appeared to result in the elimination of several bird species typically associated with trees and/or shrubland areas of the site. This is one of the first studies to show that populations of grassland birds may increase as a result of tree line removal and suggests that tree line removal may be an effective way to increase local populations of grassland birds.

KEYWORDS: Grassland Restoration, Grassland Birds, Grassland Management, Woody Vegetation Management

INTRODUCTION

Grassland bird populations have declined significantly over the last 30 years in nearly all geographic areas of North America (Sauer et al. 2004). Because of these population declines, many grassland birds have been identified as species of management concern (e.g., U. S. Fish and Wildlife Service 2002). A common response to species population declines is often to seek to acquire more habitat (O'Leary and Nyberg 2000). Such an approach, however, may divert attention away from more challenging questions concerning whether existing lands are effectively addressing the needs of declining species (O'Leary and Nyberg 2000).

For grassland birds, one important habitat consideration is the presence of edges. There is increasing evidence that many grassland birds avoid habitat edges (e.g., Delisle and Savidge 1996, Helzer 1996, Fletcher and Koford 2003, Bollinger and Gavin 2004). In particular woody edges appear to exert a strong influence on grassland bird populations, reducing bird abundance and nest density, and increasing rates of nest predation and nest parasitism (Johnson and Temple 1986, 1990, Winter et al. 2000, Jensen and Finck 2004, Bollinger and Gavin 2004).

Linear woody tree lines cutting through grassland areas also have negative effects on grassland birds (O'Leary and Nyberg 2000,

Bollinger and Gavin 2004). O'Leary and Nyberg (2000) showed that grassland bird territories and nests tended to occur on the interior of grasslands and that birds avoided setting up territories or placing nests in the vicinity of linear tree rows cutting through grassland areas, and Bollinger and Gavin (2004) found a tendency for Bobolink abundance and nest success to be lower near linear woody hedgerows than in more open areas.

Because of the negative effects of these woody features on breeding grassland birds, management guidance for grasslands often includes recommendations to remove or reduce woody elements (e.g., Sample and Mossman 1997, O'Leary and

Nyberg 2000). Although it has been widely recommended that grassland managers control or eliminate woody vegetation, data regarding bird response to such activities are presently scarce. Here I report on a study that documents breeding bird response to a linear tree row removal project that was part of a large grassland restoration project in northeastern Illinois.

METHOD

The study was conducted at Bartel Grasslands (41° 32' N, 87° 45' W), a site owned by the Cook County Forest Preserve District. Bartel Grasslands lies approximately 50 km southwest of the city of Chicago and is the subject of a large restoration project, sustained through a partnership consisting of the Cook County Forest Preserve District, Audubon-Chicago Region,

CorLands, the U.S. Army Corps of Engineers, Thorn Creek Audubon and the Bartel Grassland Volunteers. The grassland portion of the Bartel site is approximately 150 ha and at the time of the study was dominated by non-native cool-season grasses.

Removal of interior woody tree lines is one of the major restoration activities focused on the site and following the 2001 breeding season, and prior to the 2002 breeding season, nearly 4-km of interior fence row trees were removed from the study area (Figure 1). An additional 1.5 km of tree lines were removed between the 2002 and 2003 breeding seasons (Figure 1). The tree lines that were removed in 2001 were all single tree width rows that occurred in four distinct lines crisscrossing the area in a checkerboard fashion (Figure 1).

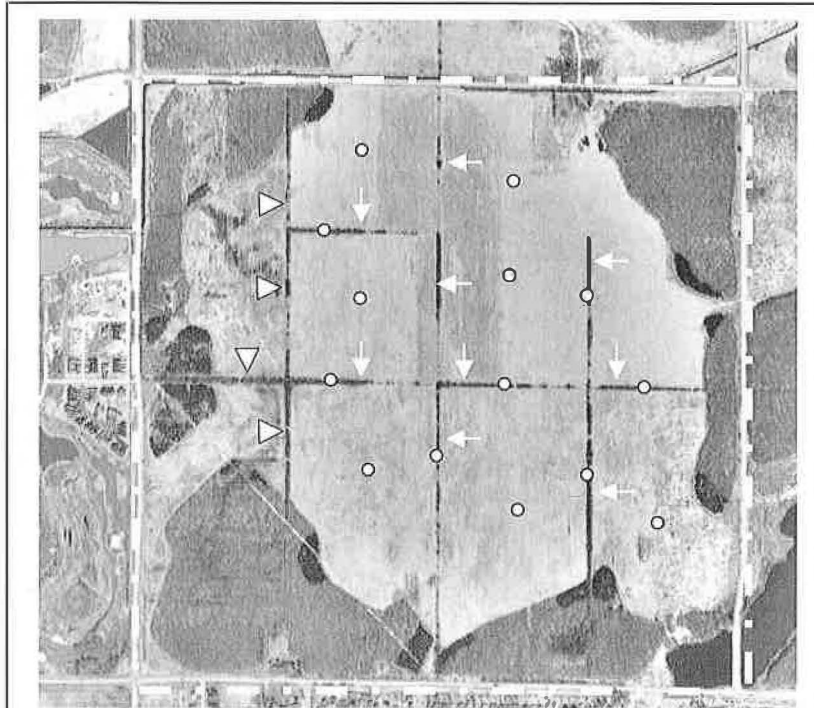


Figure 1. Aerial view of the 150 ha Bartel Grassland site prior to tree row removal. The white dashed line shows the property boundaries and the white arrows show the locations of the nearly 4 km of interior fence row trees that were removed between the 2001 and 2002 breeding seasons. An additional 1.5 km of tree lines, shown with white triangles, were removed between the 2002 and 2003 breeding seasons. White circles show the approximate locations of the 14 breeding bird census points used in the study, seven of which were initially located on tree lines and seven in open areas of the site away from any tree lines.

To evaluate the impact of tree removal on breeding bird populations at the site, bird populations at the site were surveyed using point counts in 2001, 2002 and 2003. All counts were conducted in June, followed standard methods (Ralph et al. 1993), and consisted of 100-m fixed-radius surveys in which all birds seen or heard within 100 meters of the point center were tallied during a 5-minute period. In 2001, census points were established both along the interior tree lines targeted for removal and in open areas of the site (see Figure 1). Points along the tree lines were initially located so as to maximize the number that could be fit into the area while maintaining a spacing of at least 250 m between points. Seven tree line points were all that could be fit into the area. A comparable number of seven reference points (i.e., no trees present or removed from within the point count circles) also were established. In 2001, prior to the tree removal at the Bartel site, points on tree lines were sampled as two 100 m radius half-circle sub-samples on either side of the tree line in order to minimize the risk of tree lines obstructing bird detections. Birds using the tree line also were mapped to minimize the risk of double counting birds using the tree line. After tree row removal, the former tree line points were sampled the same as all other points as a single point with 100 m radius. Bird population response to tree removal was assessed by comparing site-level changes in bird populations before (2001) and after (2002 and 2003) initial treeline removal and by also comparing population changes at the tree line points with changes observed at the reference points located in open areas of the site.

RESULTS

A total of 20 species were recorded at the 14 Bartel Grasslands census points between 2001-2003, including 19 species in 2001, 11 species in 2002 and 10 species in 2003 (Table 1). Nine species were recorded in all three years, two species in two of the three years, and



Grasshopper Sparrow numbers increased after removal of woody vegetation at Bartel Grassland.

Matt Fletcher took this photo of a Grasshopper Sparrow 3 June 2007 at Illinois Beach State Park, Lake County.

nine species in just one year of the study (Table 1). Eight of the nine species recorded in just one year were observed only in 2001, the year prior to the tree row removal. Overall, across all three years, bobolinks were the most common species at the site accounting for 45.7%

of all observations, followed by Savannah Sparrow (17.9%), Eastern Meadowlark (6.9%), Grasshopper Sparrow (6.6%) and American Goldfinch (4.1%).

In terms of changes in total abundance in the years before and after the tree removal, bobolinks,

savannah sparrows, grasshopper sparrows, and brown-headed cowbirds showed the greatest population changes. Bobolink numbers at the site changed the most of any species, increasing from 55 total birds in 2001, prior to the tree removal, to an average of 68 birds/year for the

Species	Total Number of Individuals Observed			Average Number Observed 2002-2003	Total Number of Individuals Observed 2001-2003		Illinois BBS Population Trend (1966-2003)	
	2001	2002	2003		No.	(R.A.)	(%/year)	Probability
<u>Increasesers</u>								
American Goldfinch	3	12	2	7.0	17	(4.1%)	-0.2	0.79
Bobolink	55	70	66	68.0	191	(45.7%)	-9.4	0.00
Dickcissel	0	3	0	1.5	3	(0.7%)	-3.2	0.00
Field Sparrow	2	4	3	3.5	9	(2.2%)	-2.8	0.00
Grasshopper Sparrow	4	14	10	12.0	28	(6.6%)	-7.4	0.00
Henslow's Sparrow	4	5	6	5.5	15	(3.6%)	-14.0	0.01
Red-winged Blackbird	1	4	4	4.0	9	(2.2%)	0.0	0.93
Savannah Sparrow	19	27	29	28.0	75	(17.9%)	-6.9	0.01
Song Sparrow	3	4	5	4.5	12	(2.9%)	-0.3	0.51
<u>Decreasers</u>								
American Crow	5	0	0	0.0	5	(1.2%)	0.8	0.24
Brown Thrasher	2	0	0	0.0	2	(0.5%)	-0.8	0.00
Brown-headed Cowbird	7	0	0	0.0	7	(1.7%)	1.3	0.01
Common Grackle	1	0	0	0.0	1	(0.2%)	0.6	0.45
Common Yellowthroat	2	0	0	0.0	2	(0.5%)	-0.6	0.17
Eastern Kingbird	2	0	2	1.0	4	(1.0%)	-1.3	0.04
Eastern Meadowlark	10	6	13	9.5	29	(6.9%)	-2.2	0.00
House Wren	2	0	0	0.0	2	(0.5%)	1.3	0.04
Mourning Dove	1	0	0	0.0	1	(0.2%)	0.8	0.10
Northern Cardinal	2	1	0	0.5	3	(0.7%)	0.5	0.15
Tree Swallow	3	0	0	0.0	3	(0.7%)	5.9	0.07

TABLE 1. Breeding bird abundance at the Bartel Grasslands area in Cook County between 2001-2003. Numbers represent the total number of birds observed at the site at seven census points located on tree lines that were removed between the 2001 and 2002 breeding seasons and seven points located in open areas away from any trees. Species are grouped based on their response to tree removal at the site. "Increasesers" are species whose mean abundance after tree removal (2002-2003) was greater than their pre-removal abundance (2001) and "decreasers" were species whose average abundance after tree removal was lower than their pre-removal abundance. Species long-term Illinois population trends are also shown. Population trend data are from the North American Breeding Bird Survey and are expressed in terms of percent per year population change. The statistical significance of each population trend is also shown (probability).

two years following the removal (Table 1); an average increase of 24% following the tree removal at the site. Savannah Sparrow showed the next biggest change increasing from 19 birds in 2001 to an average of 28 birds/year for 2002-2003 (Table 1), an increase of 47%. Grasshopper Sparrow was, on average, three times as abundant in the two years following tree removal (average of 12 birds/year) than they were in the year preceding the tree removal (4 birds in 2001; Table 1). Brown-Headed Cowbird showed the biggest drop in abundance at the site following tree removal, declining from 7 birds in 2001 to no birds being encountered in either 2002 or 2003. Other species recorded in 2001 prior to tree removal but not observed in either 2002 or 2003 included Common Grackle, Mourning Dove, House Wren, Common Yellowthroat, Brown Thrasher, Tree Swallow, and American Crow (Table 1).

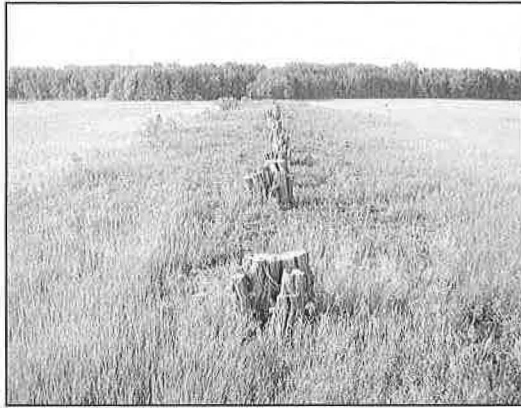


Figure 2. Picture looking down one of the former tree row lines at Bartel Grasslands, Cook County, Illinois. Picture taken in the first breeding season following treeline removal (June 18, 2002).

The comparison of population changes at points located on tree lines to the changes observed at reference points located in open areas of the site, showed that Bobolink, grasshopper Sparrow and Savannah

Sparrow numbers all increased more on tree line points than they did on points located in open areas of the site (Figure 3). Bobolink numbers at the seven tree line points increased from 14 to 30 birds between 2001 and 2002 whereas on points located in the open areas of the site Bobolink numbers declined by one bird, 41 birds in 2001 and 40 birds in 2002 (Figure 3). Between 2001 and 2002, Savannah sparrow numbers on the tree line points increased from 8 to 14 birds and Grasshopper Sparrow numbers increased from 2 to 8 birds on the tree line points (Figure 3).

DISCUSSION

Tree line removal appeared to impact breeding bird numbers at the Bartel Grassland site. Populations of several grassland bird species especially Bobolink, Savannah Sparrow, and Grasshopper Sparrow showed an immediate increase the year following tree removal at the site, with those increases also being greatest in the areas where the tree lines formerly occurred. Tree removal also appeared to result in the elimination of several species typically associated with trees and/or shrubland areas of the site (Table 1).

The bird population responses observed at Bartel Grasslands were generally consistent with previous observations of grassland bird species avoidance of woody edges and linear tree rows. Bobolink and Grasshopper Sparrow are the two grassland bird species that have most often been associated with reduced densities or nest avoidance near woody edges and woody tree rows (Johnson and Temple 1986, Delisle and Savidge 1996, Helzer 1996, O'Leary and Nyberg 2000, Fletcher and Koford 2003, Bollinger and Gavin 2004) and both increased substantially in response to tree row removal at Bartel. The Savannah Sparrow, a species that has also been shown to avoid setting up territories and placing nests near woody edges (O'Leary and Nyberg 2000),

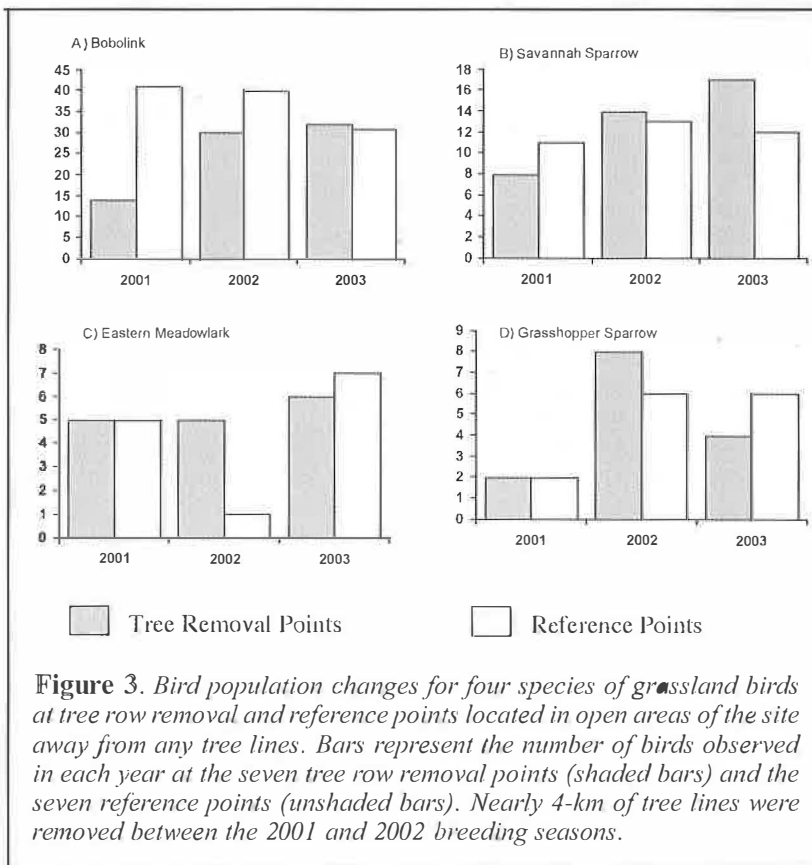


Figure 3. Bird population changes for four species of grassland birds at tree row removal and reference points located in open areas of the site away from any tree lines. Bars represent the number of birds observed in each year at the seven tree row removal points (shaded bars) and the seven reference points (unshaded bars). Nearly 4-km of tree lines were removed between the 2001 and 2002 breeding seasons.

Bobolink numbers increased after removal of woody vegetation at Bartel Grassland.

Emil Martinec took this photo of a male Bobolink at Rollins Savanna, Lake County on 29 May 2006.

also increased in abundance at the removal points (Table 1). Other grassland species that have been shown to avoid woody edges include Henslow's Sparrow (O'Leary and Nyberg 2000, Winter et al. 2000) and Dickcissel (Hughes et al. 1999, Jensen and Finck 2004). Both of these species showed small increases in abundance at Bartel following tree removal (Table 1).

Assessments of potential benefits of woody tree removal from within grassland areas must also consider the negative effects that these activities might have on non-target species. Eight species encountered at the Bartel Grasslands site in 2001, prior to the tree removal, were not observed in either of the two years of post-removal monitoring. All of these species are typically associated with woody vegetation in grassland areas, and their decline following tree removal was consistent with their known habitat preferences. Data from the North American Breeding Bird Survey (Sauer et al. 2004), indicate that statewide population trends for the species that decreased at Bartel Grasslands following tree removal have tended to be positive, with seven of these 11 species showing long-term positive population trends within Illinois (Table 1). In contrast, eight of the nine bird species (89%) that increased at Bartel Grasslands following tree removal have shown long-term population declines in Illinois (Table 1). This group includes the Bobolink, Grasshopper Sparrow, and Savannah Sparrow, which are among the fastest declining songbirds in Illinois. Thus



based on population trends, tree line removal at Bartel Grasslands tended to increase the local abundance of several species of grassland birds showing large statewide declines, and reduced the local abundance of species that were generally stable or increasing elsewhere within the state.

This study shows that populations of some grassland birds increase within grasslands in which tree lines have been removed, and suggests that tree line removal may be an effective way to increase local populations of declining grassland birds. However this study was based on a relatively small number of survey points all from a single study area. Therefore, additional research with more robust experimental designs (i.e., more removal points and multiple sites) is needed to confirm that the benefits to grassland birds observed at the Bartel site can be replicated at other sites where tree removal is being conducted to restore grassland areas.

Acknowledgements

I am very grateful to the Cook County Forest Preserve District for allowing me to conduct this research on their property. Judy Pollock, Dick Riner, Marianne Hahn, Debbie Antlitz, and Joe Roth provided helpful comments on an earlier draft of this manuscript.

Literature Cited

- Bollinger, E.K., and T.A. Gavin. 2004. Responses of nesting bobolinks (*Dolichonyx oryzivorus*) to habitat edges. *Auk* 121:767-776.
- Delisle, J.M., and J.A. Savidge. 1996. Reproductive success of grasshopper sparrows in relation to edge. *Prairie Naturalist* 28(3):107-113.
- Fletcher, R.J., and R.R. Koford. 2003. Spatial responses of Bobolinks (*Dolichonyx oryzivorus*) near different types of edges in northern Iowa. *Auk* 120:799-810.
- Helzer, C.J. 1996. The effects of wet meadow fragmentation on grassland birds. M.S. Thesis. University of Nebraska, Lincoln, Nebraska. 65 pp.
- Hughes, J.P., R.J. Robel, K.E. Kemp, and J.L. Zimmerman. 1999. Effects of habitat on dickcissel abundance and nest success in conservation reserve program fields in Kansas. *Journal of Wildlife Management* 63:523-529.
- Jensen, W.E., and E.J. Finck. 2004. Edge effects on nesting dickcissels (*Spiza americana*) in relation to edge type of remnant tallgrass prairie in Kansas. *American Midland Naturalist* 151:192-199.
- Johnson, R.G., and S.A. Temple. 1986. Assessing habitat quality for birds nesting in fragmented tallgrass prairies. Pp. 245-250 in Verner, J.A., M.L. Morrison, and C.J. Ralph, (eds). *Wildlife 2000*. University of Wisconsin Press. Madison.

Johnson, R.G., and S.A. Temple. 1990. Nest predation and brood parasitism of tallgrass prairie birds. *Journal of Wildlife Management* 54:106-111.

O'Leary, C.H., and D.W. Nyberg. 2000. Treelines between fields reduce the density of grassland birds. *Natural Areas Journal* 20:243-249.

Ralph, C.J., G.R. Geupel, P. Pyle, T.E. Martin, and D.F. DeSante. 1993. Handbook of field methods for monitoring landbirds. General Technical Report, PSW-GTR-144. Albany, CA: Pacific Southwest Research Station, Forest Service, U.S. Department of Agriculture, 41 pp.

Sample, D.W., and M.J. Mossman. 1997. Managing habitat for grassland birds a guide for Wisconsin. Wisconsin Department of Natural Resources. Madison, WI.

Sauer, J. R., J. E. Hines, and J. Fallon. 2004. The North American Breeding Bird Survey, Results and Analysis 1966 - 2003. Version 2004.1. USGS Patuxent Wildlife Research Center, Laurel, MD (accessed Feb 2, 2005).

U.S. Fish and Wildlife Service. 2002. Birds of conservation concern 2002. Division of Migratory Bird Management, Arlington Virginia. 99 pp. [online version available at <http://migratorybirds.fws.gov/reports/bcc2002.pdf>].

Winter, M., D.H. Johnson, and J. Faaborg. 2000. Evidence of edge effects on multiple levels in tallgrass prairie. *Condor* 102:256-266.

— James R. Herkert
494 Juniper Drive
Petersburg, IL 62675

James.Herkert@Illinois.gov

Ruby-throated Hummingbird feeds on pear

by John G. Palis

Ruby-throated Hummingbirds (*Archilochus colubris*) feed principally on flower nectar and small invertebrates (Robinson et al. 1996), but will also feed on tree sap at Yellow-bellied Sapsucker (*Sphyrapicus varius*) sap wells (Smith 1954, Miller and Nero 1983). Herein, I describe an observation of a Ruby-throated Hummingbird feeding on a novel food item, an over-ripe pear, during autumn migration.

On 28 September 2009, I observed an adult female or juvenile Ruby-throated Hummingbird flying amid the branches of a feral pear tree (*Pyrus communis*) on the Cache River State Natural Area, Johnson County, Illinois (37°19.182N, 88°57.151W). The sky was cloudless and the air temperature was approximately 18°C. The bird focused its attention on an over-ripe pear ca. 2.5 m above the ground. It hovered adjacent to the upper half of the pear, completely inserting its bill into a small hole near the top. While at the pear, the bird inserted its bill into the pear multiple times, for 2-9 seconds at a time (a mean of 5.25 seconds during eight, timed beak insertions). After feeding, it flew to a nearby branch on an adjacent black locust (*Robinia pseudoacacia*) where it wiped its bill and rested. While resting the bird appeared drowsy, abruptly nodding its head downward several times. The bird repeated this feeding/resting behavior several times while under observation from a distance of ca. 2 m from 1055-1110 CDST.

The following day, I detached the pear from the tree, cut a slit in the skin from the hole downward, and examined the interior. The feeding shaft was ca. 1-2 mm in diameter and ca. 10 mm long. The shaft terminated in a juicy, semi-solid,

fermented mass of pulp. Because I did not observe adult or larval fruit flies (*Drosophila*) on or in the pear, I assume the hummingbird had been feeding on the fermented pear pulp. The bird's head-nodding behavior while perched suggests that it may have been exhausted from migration travel or experiencing ethanol intoxication from consuming fermented pulp. This, I believe, is the first report of a Ruby-throated Hummingbird feeding on the juicy pulp of a domestic pear.

Acknowledgements

I thank Robert Sargent, Brainard Palmer-Ball, and Cathie Hutcheson for confirming the uniqueness of this observation.

Literature Cited

Miller, R. S. and R. W. Nero. 1983. Hummingbird-sapsucker associations in northern climates. *Canadian Journal of Zoology*. 61: 1540-1546.

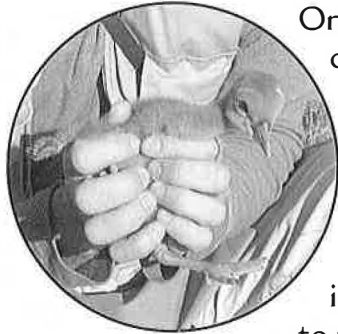
Robinson, T. R., R. R. Sargent, and M. B. Sargent. 1996. Ruby-throated Hummingbird (*Archilochus colubris*). In *The Birds of North America*, No. 204. A. Poole and F. Gill (eds.). The Academy of Natural Sciences, Philadelphia, and The American Ornithologists' Union, Washington, D.C.

Smith, J. H. 1954. Ruby-throated hummingbird feeding at yellow-bellied sapsucker holes. *Auk*: 71: 316.

— John G. Palis
P.O. Box 387
Jonesboro, IL 62952
jpalis@yahoo.com

IOS awards six \$1,000 bird research grants

By Robert Fisher



One of the Illinois Ornithological Society's primary objectives is "to promote scientific research and education in order to improve knowledge and awareness of birds in Illinois."

For 2010, IOS – with support from the Chicago Ornithological Society, the DuPage Birding Club and a number of individual donor/members – is proud to have awarded six, \$1000 research grants to the following persons (in alphabetical order):



Sarah Cleeton works at a monitoring site.

Sarah Cleeton

Sarah Cleeton is a graduate student at the University of Illinois, pursuing a master's degree in the Department of Natural Resources and Environmental Sciences. Her IOS grant project will assess the **effects of habitat restoration on woodland songbirds in the Chicago area, and determine if woodland patches considered high quality support higher avian diversity.**

The spread of invasive plants (such as European buckthorn) is quite extensive throughout Midwestern oak woodlands. Invasive vegetation is known to change ecosystem processes and negatively impact native plant communities, but little is known about how bird species diversity responds to these changes.

- During the 2010 breeding season, point counts were conducted three times each at 47 different woodland sites in the Chicago metropolitan area; those point counts will be repeated in 2011.
- Sites were chosen to represent a gradient of time since restoration took place.
- Vegetation measurements (structure and composition) were taken at each site, to examine the relationship between the bird community and invasive plants.

Preliminary results from the 2010 field season indicate that an increase in the number of invasive shrubs in the understory may decrease both bird abundance and species richness. Results from this study should inform future restoration strategies aimed at improving habitat for woodland songbirds.

All photos courtesy of grant recipients, except photo of Jeff Fox.

Jason Fischer



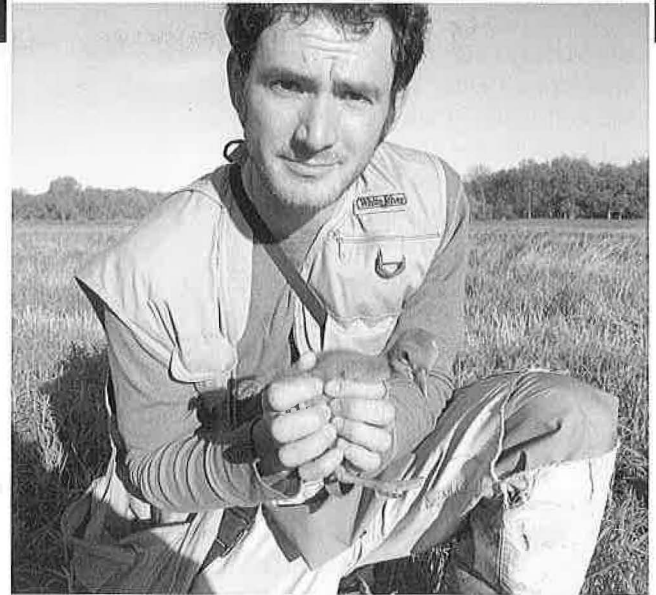
Jason Fischer is a third year PhD student in the Program for Ecology, Evolution, and Conservation Biology at the University of Illinois. Fischer's IOS grant project will test what's known as the overmatching hypothesis: *High urban densities of birds are the result of low predation pressure and abundant food sources, the combination allows more birds of poor body condition to survive.*

Fischer work consists of the following:

- Studying a community of birds utilizing feeders, along an urban to rural gradient in Champaign County, Illinois.
- Capturing birds at feeders with mist nets, then assessing their body condition and marking them with a unique combination of colored leg bands. The bands allow individuals to be identified during ongoing observations at feeders to determine if there are connections between particular feeding behaviors and body condition.

*Jason Fischer holds a feisty
Rose-breasted Grosbeak.*

Jeffrey Fox



Jeffrey Fox is a graduate student in the Natural Resources and Environmental Sciences Department at the University of Illinois. Fox's IOS grant project evaluates reproductive success of Sandhill Cranes in northeastern Illinois, a continuation of work begun in 2008. (See Fox's article, "Sandhill Crane colt survival in northeastern Illinois," published in Vol. 18, No. 4 of *Meadowlark*).

During the ongoing study:

- Eighty-five Sandhill Crane colts in Lake and McHenry Counties have been captured and then radio-tagged to enable tracking to determine their fate.
- Recaptures were conducted to collect DNA and to band surviving birds before reaching 10 weeks of age – the age when they begin sustainable flight. Permanently marked birds should provide information on the dynamics of the juvenile demographic and recruitment rates in the future.

The data suggest that colt survival may be strongly influenced by annual variations, for example, in weather. Within a given year, hatching date appears to be a less significant determinant of survival. The probability of survival for a bird hatched during the last week of April is the same as for a bird hatched during the last week of May. Models are also being evaluated to determine whether use of different landscapes (e.g. agricultural, wetland) affect survival rates. Current estimates of survival for colts hatched in northeastern Illinois do not yet include any data on whether they are returning and then entering the breeding population. This is an essential component of population studies and the planned focus of future research.

*Jeff Fox holds a newly born Sandhill Crane
at Chain O'Lakes State Park, Lake County.
Photo by Sheryl DeVore.*

Kelly McKay

Kelly McKay of the BioEco Research and Monitoring Center and seven field research colleagues (Cathleen Monson, Robert Bryant, Walter Zuurdeeg, Shirley VanMeter, Jennifer Rothe, Brian Ritter, and Jason Monson) will be using the IOS grant to conduct the first-ever weekly Bald Eagle population survey project on the Upper Mississippi River between Lock and Dams 14 and 16 (Rock Island County) during the 2010-2011 winter season. This research complements the ongoing Milan Bottoms Bald Eagle night roost survey project, which will be conducted for a sixth consecutive winter. The primary objective of the Milan Bottoms night roost study is to document the importance of this location to local and regional wintering Bald Eagle populations, as well as to investigate the potential impacts of various ongoing human development activities, in close proximity to this site, as they relate to night roosting eagles. Milan Bottoms is a major Bald Eagle night roost location, although use has varied considerably between winters.

- In 2005-2006, researchers made 10,386 observations of eagles entering and exiting the night roost throughout the study.

- The number of observations decreased to 2,553 during the 2006-2007 winter season, but rebounded substantially in 2007-2008 to 6,957 total observations.



Kelly McKay (far left in photo) is working with a crew to survey Bald Eagle roosting sites.

- During the last two winters (2008-2009 and 2009-2010), eagle numbers wintering in Milan Bottoms again declined, resulting in overall observations of 3,244 and 2,826, respectively.

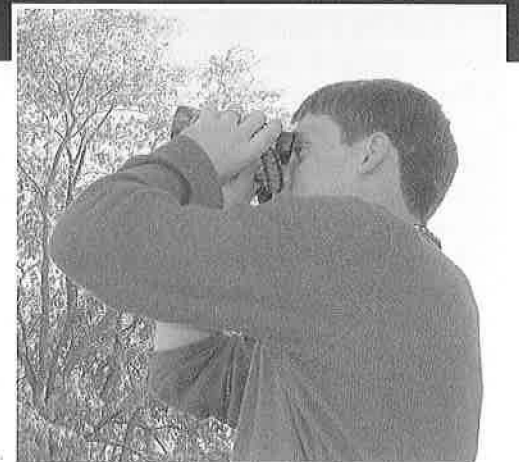
The new river survey will document the number of eagles wintering in the vicinity of Milan Bottoms each week. These data, when combined with data from the night roost study, will provide a good approximation of the proportion of wintering Bald Eagles that are night roosting within the Milan Bottoms study area, and provide a better understanding of the overall importance of Milan Bottoms to both local and regional wintering Bald Eagle populations.

Peter Oliver

Peter Oliver of the Dixon Illinois Park District is using the IOS grant to conduct a bird census at the 200-acre Lowell Park in Dixon. The results of that census will be used to develop a natural resource management plan for the park, with the specific aim of enhancing bird habitat. The avian survey for Lowell Park is ongoing. The survey route has been run three times by Tara Beveroth of the Illinois Natural History Survey – twice during summer and once in fall. The survey route contains nine points within the park. Here are preliminary results:

- Forty-seven species have been recorded so far, the most common being Black-capped Chickadee, White-breasted Nuthatch, and Wood Thrush.

- Uncommon species observed include Pileated Woodpecker, Yellow-billed Cuckoo, and Yellow-bellied Flycatcher.



Peter Oliver is surveying birds at Lowell Park.

Ben O'Neal

Ben O'Neal, who recently graduated from University of Illinois and is now Assistant Professor of Biology at Franklin College in southeastern Indiana, received an IOS grant to continue his work on the four-year study of American Golden-Plovers, their spring migration patterns and habitat usage (see O'Neal and co-author Mark Alessi's article, "The Plover Project" published in Vol. 17, No. 2 of *Meadowlark*).

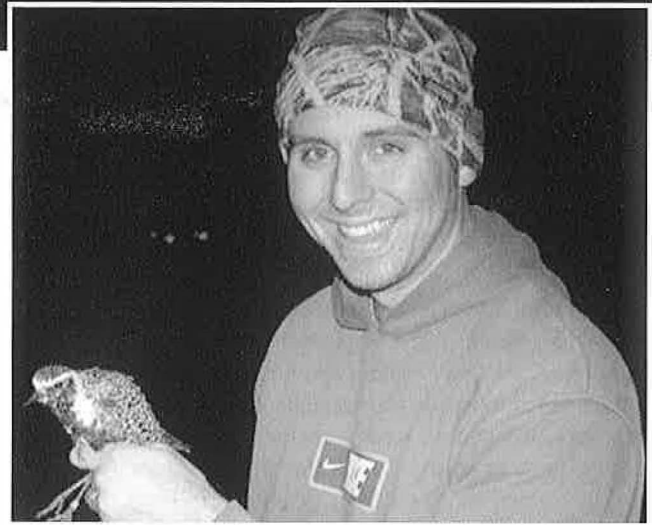
In spring of 2010, O'Neal and his colleagues at the U of I and INHS:

- Trapped and radio-tagged five American Golden-Plovers in east-central Illinois.
- Tracked these five plovers throughout their stopover and found average stopover duration of 17 days, longer than previously thought.
- During that time, the five plovers moved considerably, occupying an average home range of 856 hectares (slightly more than 2,100 acres).

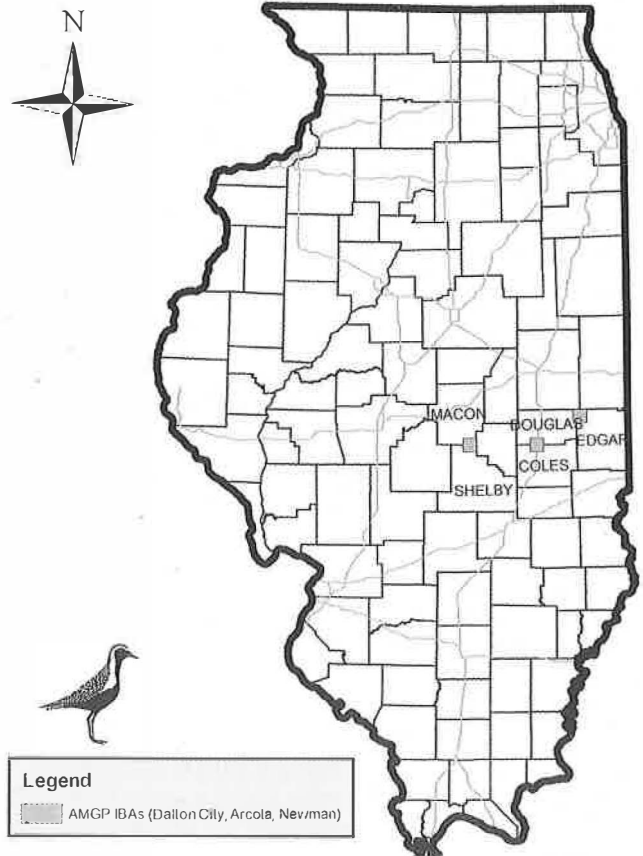
For the third consecutive year, student volunteers and local birders documented substantial plover abundance (13,805) in several key areas, three of which have been named by the National Audubon Society as American Golden-Plover Important Bird Areas.

In 2011, IOS expects once again to receive many proposals for worthwhile bird research projects. For more information, go to www.illinoisbirds.org.

– *Compiled by Robert Fisher,
President, Illinois
Ornithological Society*



Ben O'Neal is studying American Golden-Plovers.



A map of Illinois shows where Important Bird Areas are located for the American Golden-Plover.

Sixteenth Report of the Illinois Ornithological Records Committee

by Douglas F. Stotz

Evaluations by the Illinois Ornithological Records Committee ("IORC," or "the Committee") are reported here for a total of 43 records, including 41 accepted records of 31 species, and two unaccepted records of two species. A total of 51 observers contributed reports, including descriptions or photographs documenting the records included in this report. Included are reviewed species evaluations by the Committee from 2007 through 2010. The format of this report generally follows the conventions used in the first through fifteenth reports of the Committee (e. g. Goetz and Robinson 1988; Goetz 1990; Johnson et al. 1998; Johnson and Stotz 1999; Stotz and Johnson 2000; Stotz 2001; Stotz and Johnson 2003, Stotz 2009b). The records below are divided into two major groups: Accepted and Unaccepted. Each of these groups is then further divided into First State Records, Review List Records, and Other Records. The nomenclature, English names and sequence of species conforms to that of the seventh edition of the American Ornithologists' Union's checklist (1998) and its supplements, through the 51th (Chesser et al. 2010).

An accepted record is entered with the locality, including county, the date, and (in parentheses) the IORC record number (the first four characters of which give the year of the first observation), and the initials of the primary observer(s) who contributed specimens, descriptions, and/or photographs. Similar information is provided for unaccepted records, except the observers remain anonymous, and a brief explanation of why the record was not accepted is given. The initials of a contributor without any further modification, indicates that no more than written documentation was provided by that observer. When additional evidence exists, a colon follows the observers name with the following codes: p for photographic evidence, v for video, s for sound recording. Many contributing photographers also submitted written descriptions—a practice the Committee encourages. If the observer who first discovered the bird is known to the committee, their initials are set off from the initials of other contributors by a semicolon. Initial observers who did not submit documentations are not always listed. For specimen records, a sharp (#) follows an abbreviation for the institution holding the specimen, along with that institution's catalog number of the specimen if available.

Several records that were seen by several to many observers were documented by only one or two of these observers. The Committee would like to encourage all observers to document all the review list species they see. Documentation by multiple observers can provide additional evidence and support for the identity of rarities. Often records that have not been accepted suffer from incomplete information, a problem which additional documentation by other observers could help overcome.

Information on the age and sex of the birds reported may be an opinion of the person(s) submitting the evidence and is not necessarily an accepted position of the Committee. All other remarks are the author's, although most of the information comes from the Committee files which are now stored in Chicago, Illinois, in the Bird Division of the Field Museum.

In several cases there are discrepancies between the details presented here vs. other published sources, especially regarding dates of occurrence. The data in this report provide the Committee's best assessment of all available information. We have not generally commented on records that are published elsewhere with more limited data than contained here. The Committee accepts responsibility for any inaccuracies or misrepresentations of information herein. Errors that come to our attention will be published as corrigenda in a future IORC report.

Abbreviations: References to seasonal reports in the journals *Illinois Birds and Birding*; *Meadowlark*, *A Journal of Illinois Birds*; *American Birds* and *North American Birds* are abbreviated by IBB, MJIB, AB, and NAB, respectively, followed by volume and page numbers. Months are abbreviated by their first three letters.

"Northern", "central", and "southern Illinois" refer to specific subsections of the state as first defined by Gault (1922); see also Bohlen (1978). The terms "region" and "regional" apply to the Middlewestern Prairie Region as used in NAB and include Illinois as well as Iowa, Missouri, Indiana, and most of Ohio and Kentucky.

Observers and Documentors: Amar A. Ayyash, Cornelius P. Alwood, Mark Bowman, Michael J. Baum, Samuel B. Burckhardt, Carl & Penelope DauBach, Dean DiTomasso, Edwin C. Franks, Karen D. Fisher, Matthew E. Fraker, Rick Fox, Robert E. Fisher, Ann B. Haverstock,

C. Leroy Harrison, Frank L. Holmes, Kanae Hirabayashi, Robert D. Hughes, Lynnette Ishmael-Miller, Dan M. Kassebaum, Vernon M. Kleen, Gregory S. Lambeth, Karen Lund, Keith A. McMullen, Karen K. Mansfield, Michael A. Madsen, Matt McKim-Louder, Pete A. Moxon, Robert A. Morgan, Terry & Sherrie Martin, Walter J. Marcisz, Greg Neise, Malora Redman, Rhonda M. Rothrock, Rick Remington, William M. Rowe, Alan F. Stokie, Andrew P. Sigler, Douglas F. Stotz, Elliot Schunke, Jeff A. Smith, Jeffrey R. R. Skrentny, Lavonne Sharp, Mark S. Seiffert, Robert E. Shelby, Rick & Linda Scheibel, Wesley S. Serafin, Geoffrey A. Williamson, Mabe & Kevin Wassel.

Review List: The Review List includes species for which the committee will review all records or all records outside of some determined range within the state. These are species that, in general, average two or fewer records per year in the state, or which are extremely rare in all but a few counties in the state. The current review list was approved at the 21 September 2008 committee meeting. IORC requests and welcomes evidence concerning all records for the review species listed on the review list on the IOS/IORC website: www.illinoisbirds.org/iorc.html.

In addition, any species not listed in the checklist of Illinois state birds (IORC 1999, see also list on IOS website at http://www.illinoisbirds.org/birds_of_illinois1.html) should be documented. Documentation of regular species may be appropriate when they occur

out of season – i.e., exceptionally early arrival dates or late departure dates for migratory species. All first state nesting records should also be documented. Exceptionally high counts of species may also merit documentation. These documentations of non-review list species should generally be sent to the seasonal editor of the Field Notes in the *Meadowlark*. Both the Christmas Bird Count and Spring Bird Count require documentation of a greater range of species. Such documentations should be sent to the appropriate compiler. Some records from each of these long-term projects are reviewed by IORC, and the documentations supporting observations of rare birds on them are largely stored at the Field Museum with the other IORC archives.

Acknowledgements. This report is made possible by the thoughtful, careful and timely review by all committee members both past and current, and by the support of Illinois birders and institutions which contributed evidence of Illinois birds by specimens, documentations, photographs, and/or videos. Thanks to the committee members who reviewed these records for intelligent, thoughtful reviews. These committee members were Bob Hughes, Dan Kassebaum, Travis Mahan, Paul Sweet, Mike Ward, and Geoff Williamson; Bob Fisher, acting as an alternate member of IORC also reviewed some records included in this report. The author served as committee secretary.

ACCEPTED RECORDS

New State Records (one record of one species)

Green Violetear (*Colibri thalassinus*) One photographed at a feeder near Mascoutah, St. Clair Co. on 10 Aug (2009.033; R&LS:p). This tropical species found from Mexico to Central Bolivia has been recorded more than 30 times in Texas (Newfield 2001) and sparsely across eastern North America north to Ontario and Michigan (AOU 1998). The photos clearly demonstrate that this bird belongs to the *thalassinus* group of subspecies found in Mexico and northern Central America rather than the more distant *cyanotis* group found from Costa Rica south.

Review List Species (39 records of 29 species)

Black-bellied Whistling-Duck (*Dendrocygna autumnalis*) Two were seen and photographed at Bellrose Refuge, Cypress Creek NWR, Pulaski Co.



Green Violetear.
10 August 2009. Fayetteville,
St. Clair County.
Photos by Rich Scheibel.

on 6 May (2009.061; MML:p); One was photographed at Bischoff rd., Granite City, Madison Co. on 31 May to 15 Jun (2009.056; FLH; DMK:p). One photographed in Calhoun Co. on 18 May (2010.007; DMK:p).

Brant (*Branta bernicla*) One was along the Illinois River in downtown Peoria, Peoria Co. and immediately across the river in Tazewell Co. on 3-9 Dec (2009.034; RF:p).

Mottled Duck (*Anas fulvigula*)

One photographed at Santa Fe Bottoms, Clinton Co., 30 Jul - 6 Sep (2009.036; DMK:p). Dates listed for this individual in Stotz (2009a) are incomplete.

King Eider (*Somateria spectabilis*) One first winter male photographed on the Little Calumet River, Chicago, Cook Co. on 17 Feb (2010.001; SBB:p).

Neotropic Cormorant (*Phalacrocorax brasilianus*) One was photographed and stayed at Carlyle Lake, Clinton Co. from 30 Jul to 5 Sep (2009.079; DMK). One was present near Lake Calumet during the period 28 May to 31 July (2010.018; WJM:p, APS; RDH:p, SBB:p, ESc:p). This bird was originally found as a fly-over among large numbers of Double-crested Cormorants southwest of Lake Calumet. Beginning on 6 June, the bird was found regularly during the day at Burnham Prairie southeast of Lake Calumet. It clearly did not roost at that site and typically seemed to arrive mid-morning, usually with small numbers of Double-crested Cormorants.

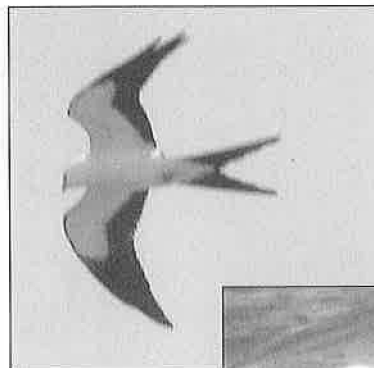
Anhinga (*Anhinga anhinga*) Up to six adults, Lower Cache River, Pulaski Co., and 5 active nests, Little Black Slough, Johnson Co., 3 of which were confirmed to contain nestlings, 23 May to 14 Jul (2009.070; MML:p). The committee already accepted a photographic record of one of these birds from May in Pulaski Co. (IORC2009.029; Stotz 2009b). This is the first confirmed nesting record for Illinois of this species. The AOU checklist (1998) states that it formerly bred in southern Illinois, but there appear to be no specific records of such breeding (Bohlen 1989). It bred until the late 1800s in far southeastern Missouri (Robbins 1992), and in southwestern Kentucky until the 1950s (Palmer-Ball 2003). Currently the nearest breeding colony is in extreme western Tennessee (Nicholson 1997).



Mottled Duck. Private property in Santa Fe Township, Clinton County. 5 August 2009. Photo by Dan Kassebaum.



Roseate Spoonbill with Great Egrets. Vandalia, Fayette County. 23 September 2009. Photo by Greg Neise.



Swallow-tailed Kite. Southwest McHenry County. 16 August 2010. Photo by Robert Morgan.



Little Gull in basic plumage. Carlyle Lake, Clinton County. 31 October 2009. Photo by Dan Kassebaum.

Roseate Spoonbill (*Platalea ajaja*) One was photographed at Carlyle Lake, Clinton Co. on 30 July (2009.037; DMK).

White Ibis (*Eudocimus albus*) One immature was at Wabash Bottoms, Wabash Co. on 12-18 Jul (2009.038; CLH, RES; DMK:p). Four to 5 immatures along the Mississippi River levee in Monroe Co., 19-27 Jul (2009.060; CPA; WMR:p, JRRS:p, KAM:p). One immature photographed at Mitchie, Monroe Co. on 29 Jun-1 Jul (2010.006; DMK:p); another immature was photographed at Fountain, Monroe Co. on 21-24 Jul (2010.005; DMK:p). While currently this species seems to have increased in numbers Illinois with multiple records from 2008 to 2010, there have been previous periods of increased abundance in Illinois, such as 1976-8 when there were five records for the state.

Swallow-tailed Kite (*Elanoides forficatus*) One photographed in SW McHenry Co on 16 Aug (2010.017; RAM:p). After decades of near complete absence from the upper Midwest, this species is beginning to appear with increasing frequency. This is at least the fifth record in the past decade in Illinois.

Prairie Falcon (*Falco mexicanus*) One seen at Lake Shelbyville, Moultrie Co. on 22 Sep (2009.053; KAM).

Little Gull (*Hydrocoloeus minutus*) One adult seen at Alton, Madison Co. on 11 May (2009.051; KAM); one basic adult photographed at Carlyle L, Clinton Co. on 31 Oct (2009.078; DMK); one seen at the same site on 21 Nov was thought to represent the same individual.

Adult male Broad-billed Hummingbird.

*Second state record.
Clinton, DeWitt County.
25 August 2010.*

Photos by Lynnette Miller-Ishmael.

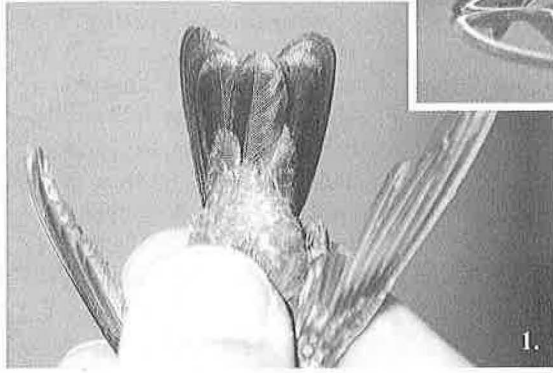


Figure 1 – The banded Broad-billed Hummingbird revealed deep steely blue, notched tail feathers.

Figure 2 – The Broad-billed Hummingbird has a long, slightly decurved, two-tone bill.

Figure 3 – The Broad-billed Hummingbird visits feeders with Ruby-throated Hummingbirds, whose wing span and body length are smaller.

Black-legged Kittiwake (*Rissa tridactyla*) One first-year bird photographed at Clinton Lake, DeWitt Co., on 29 Nov – 6 Dec (2009.064; MEF:p).

Royal Tern (*Thalasseus maximus*) One adult in basic plumage was photographed at LaSalle Lake, LaSalle Co. on 9-10 Jul (2009.032; APS, MAM, AFS; GN:p). This is the third report for the state reviewed and accepted by IORC; the last accepted report was from 1988. Two additional records exist from before the formation of IORC (Bohlen 1989).

Sandwich Tern (*Thalasseus sandvicensis*) One adult was along the Lake Michigan lakefront of Cook Co. on 11-30 Sep (2010.014; RR:p; RDH:p; SBB:p; GN:p; JRRS:p). The bird was found at Evanston on 11 September, then re-found at Montrose on 14 September, and then at 63rd Street Beach and Rainbow Beach on 15 September. It was not seen for the next two weeks but was photographed as a fly-by at Montrose on 30 September. Comparisons of photos from all of these sightings make it clear that only a single individual was involved. It showed a nearly entirely black crown, with white speckling on the forecrown, an unusual plumage for this late in the season. There is one previous record of Sandwich Tern from Illinois, an accepted single observer sight record from Waukegan in April 1989. The possibility that this individual is referable to the nominate Eurasian subspecies instead of the widespread North American form *acutiflavus* has been raised, and research is on-going into this question.

White-winged Dove (*Zenaida asiatica*) One photographed in DeKalb Co., on 14 June (2009.030; T&SM; KL:p). The bird was apparently present for

the first three weeks of June. One photographed at Colchester, McDonough Co. on 17 Jun (2009.031; ECF). This species has become annual in small numbers since the first record in 1998. Most records come from late April through June.

Barn Owl (*Tyto alba*) One photographed on a window ledge of a high rise in Lincoln Park, Chicago, Cook on 18 Nov (2005.049; LS).

Burrowing Owl (*Athene cucularia*) One photographed at American Bottoms, Monroe Co. on 22 May (2010.010; KAM:p; MSS).

Broad-billed Hummingbird (*Cyananthus latirostris*) An adult male photographed, captured and banded at a feeder in rural DeWitt Co. on 24-25 Aug (2010.021; LIM:p; VMK). This is only the second record for Illinois. The first record was a female photographed and banded at a feeder in Peoria Co. in November 1996 (Johnson et al. 1998). There are many records outside its breeding range in Arizona and New Mexico for this species in the southwestern and southeastern United States, but relatively few records elsewhere in North America. In the upper Midwest, besides the two Illinois records, Broad-billed Hummingbird has been found in Wisconsin, Michigan and Ontario (R. C. Domagalski, unpub.).

Tropical Kingbird (*Tyrannus melancholicus*) One photographed, captured, banded and measured in the hand at Carlyle L, Bond and Fayette Cos. on 13-19 Jun (2009.073; DDT:p; KAM:p; DMK:p; VMK). The photographs are very suggestive of a Tropical rather than Couch's Kingbird based on long bill, longer primary projection and deeply forked tail. In addition,

the measurements taken when the bird was banded clearly rule out Couch's Kingbird based on the relatively short wing chord, long culman length, and wing formula (see Pyle 1997 for details of identification).

Fork-tailed Flycatcher

(*Tyrannus savana*) One adult male at Gateway Park, East Moline, Rock Island Co. on 20-25 Nov (2009.057; M&KW:p, MR:p). This is the third record for Illinois and the first in the fall or away from the Chicago area.

Bewick's Wren (*Thryomanes bewickii*) One was photographed in Champaign, Champaign Co. on 14-15 Mar (2009. 080; MML; GSL:p). One seen along the LaMoine River, McDonough Co. on 3 Sep (2009.039; MJB). One photographed at Siloam Springs SP, Brown Co. on 31 May (2010.009; DMK:p). Siloam Springs is, and has been for at least a decade, the only known breeding site for Bewick's Wren in Illinois. Records from other sites have been few in recent years, and like the two 2009 records here involve birds seen during migration.

Sage Thrasher (*Oreoscoptes montanus*) One photographed on Northerly Island, Chicago, Cook Co. on 10 Nov (2009.059; KKM; JRRS:p, GN:p, DFS). This is only the fourth record from Illinois and the first record since 1974. All these reports come from the Lake Michigan lakefront (Bohlen 1989).

Sprague's Pipit (*Anthus spragueii*) One seen at Greene Valley FP, DuPage Co. on 27-31 Oct (2009.058; REF, KDF; JAS:p).

Black-throated Gray Warbler (*Dendroica nigrescens*) One female at Elsen's Hill FP, DuPage Co. 18 Sep to 11 Oct (2010.022;



Fork-tailed Flycatcher. East Moline, Rock Island County. 25 November 2009. Photo by Kevin Wassell.



Bewick's Wren. Champaign swine ponds, Champaign County. 15 March 2009. Photo by Greg Lambeth.



Sage Thrasher. Northerly Island, Cook County. 11 November 2009. Photo by Greg Neise.



Adult male Lark Bunting. Montrose Point, Cook County. 10 August 2009. Photo by Kanae Hirabayashi.

PAM; GN:p, AAA:p). This bird was still present as of this writing (13 Oct 2010). This is about the ninth record for the state; not all have been considered by IORC. Most records have been spring birds remaining for only a short period.

Swainson's Warbler

(*Limnithlypis swainsoni*) A pair was present in the Shawnee National Forest of Jackson Co. from at least 20 Jun to 27 Jul (2009.055; RMR; DMK:p, MML:p of possible nest). A completed, but empty nest matching the characteristics of the species was found at this location.

MacGillivray's Warbler

(*Oporornis tolmiei*) A singing male was photographed and sound recordings obtained at Waterfall Glen FP, DuPage Co. on 9-11 Jul (2008.053; MAM:s; WSS:p, DMK:s). This is the third accepted record of this species from Illinois. The other records have been during spring migration in May.

Lark Bunting (*Calamospiza melanocorys*)

One adult male photographed at Montrose, Chicago, Cook Co. on 10 Aug (2009.072; RDH; GAW:p, KH;p).

Great-tailed Grackle

(*Quiscalus mexicanus*) One female seen and photographed at Coulterville, Randolph Co. and nearby in Perry Co. on 30 Dec (2009.035; JRRS, GN:p). There was some discussion that 2 birds may have been present, but the original observers concluded that there was only a single bird present in a flock of mixed blackbirds numbering 10,000+. Reports of this species at this site persisted until at least 3 January 2010, but there is no documentation of the species after the initial day of observation.

Meadowlark

Other accepted records
(*One record of one species*)

White-faced Ibis (*Plegadis chihi*) An adult photographed at Prairie Green FP, Kane Co. on 27 May (2009.013; MB:p; ABH:p).

UNACCEPTED RECORDS

Review List Records Unaccepted
(*one record of one species*)

Prairie Falcon (*Falco mexicanus*) A large falcon photographed at Levee and Mitchie Rd., in Monroe Co., on 4 Sep (2010.016) was identified as a Prairie Falcon by the observers. The committee reviewed the photo and written documentation and concluded that the bird in question was a juvenile Peregrine Falcon of the race *tundrius*. The bird showed a pale superciliary like a Prairie Falcon, but this is shared with young *tundrius*. To the committee, the back looked far too dark for a Prairie Falcon, the dark stripe through the eye was too broad, it lacked white immediately behind the eye, and also lacked the dark mark behind the auriculars typical of Prairie Falcon. Although conditions for seeing the dark axillaries in flight were limited because the bird flew directly away from the observers, this did not help to confirm Prairie Falcon as an identification.

Other unaccepted records
(*one record of one hybrid*)

Blue-winged Teal X Mallard A female duck photographed accompanying a male Mallard at the Little Calumet River, Chicago, Cook Co. on 26 Feb-5 Mar (2010.004) was thought by the observer to represent this hybrid combination. The combination of poor quality photos and limited detail in the written documentation made it impossible for the committee to accept this identification. The majority of the committee was unconvinced that the bird in question was not a female Mallard. Even if a hybrid origin was accepted for the bird, the postulated parentage of Blue-winged Teal x Mallard could not be established. There were no plumage characters that seriously suggested a Blue-winged Teal as a parent.

Literature Cited

See page 56 for journal abbreviations.

American Ornithologists' Union. 1998. Check-list of North American birds, seventh edition. Washington, D.C.: American Ornithologists' Union.

Bohlen, H. D. 1978. An annotated check-list of the birds of Illinois. Illinois State Museum Popular Science Series, Vol. IX.

Bohlen, H. D. 1989. The birds of Illinois. Bloomington, IN: Indiana University Press.

Chesser, R. T., Banks, R. C., F. K. Barker, C. Cicero, J. L. Dunn, A. W. Kratter, I. J. Lovette, P. C. Rasmussen, J. V. Remsen, Jr., J. D. Rising, D. F. Stotz and K. Winker. 2010. Fifty-first supplement to the American Ornithologists' Union *Check-list of North American Birds*. Auk 127:726-744.

Ford, E. R., C. C. Sanborn, C. B. Coursen. 1934. Birds of the Chicago region. Chicago Academy of Sciences Program of Activities 5:17-80.

Gault, B. T. 1922. Checklist of the birds of Illinois. Chicago: Illinois Audubon Society.

Goetz, R. E. 1990. Third report of the Illinois Ornithological Records Committee. IBB 6:9-14.

Goetz, R. E. and J. C. Robinson. 1988. First report of the Illinois Ornithological Records Committee. IBB 4:57-63.

Illinois Ornithological Records Committee. 1999. Checklist of Illinois State Birds. Evanston: Illinois Ornithological Society.

Johnson, D. B., P. R. Clyne, and M. F. Deaton. 1998. Fourth report of the Illinois Ornithological Records Committee. MJIB 7:50-65.

Johnson, D. B., and D. F. Stotz. 1999. Fifth report of the Illinois Ornithological Records Committee. MJIB 8:53-62.

Newfield, N., 2001. Green Violet-ear. *Birding* 33:114-121.

Nicholson, C.P. 1997. Atlas of the Breeding Birds of Tennessee. Knoxville, TN: University of Tennessee Press.

Palmer-Ball, Jr., B. 2003. Annotated Checklist of the Birds of Kentucky. 2nd Ed. Louisville, KY: Kentucky Ornithological Society.

Pyle, P. 1997. Identification Guide to North American Birds. Bolinas, CA: Slate Creek Press.

Robbins, M. B. and D. Easterla. 1992. Birds of Missouri. Columbia, MO: University of Missouri Press.

Stotz, D. F. 2001. Seventh report of the Illinois Ornithological Records Committee. MJIB 10:52-58.

Stotz, D. F. 2009a. Field Notes: The 2008 fall migration. MJIB 18:57-76.

Stotz, D. F. 2009b. Fifteenth report of the Illinois Ornithological Records Committee. MJIB 18:80-85.

Stotz, D. F., and D. B. Johnson. 2000. Sixth report of the Illinois Ornithological Records Committee. MJIB 9:50-55.

Stotz, D. F., and D. B. Johnson. 2003. Ninth report of the Illinois Ornithological Records Committee. MJIB 12:55-61.

— Douglas F. Stotz, Senior Conservation Ecologist
Field Museum of Natural History
1400 S. Lake Shore Drive
Chicago IL 60605
dstotz@fieldmuseum.org



Field Notes: The 2009 fall migration

by Douglas F. Stotz

Field notes drawing of a Sage Thrasher by Jenny Vogt.

Autumn of 2009 was unimpressive for common migrants. Temperatures were near normal through October, but November was substantially above average. August and October were very wet, but September and November were much drier than usual. Landbird migration got a late start, with little moving in August. Shorebirds were generally below average in numbers and diversity due to high water levels. Fronts were few and weak resulting in little in the way of strong migratory movements. However, an extremely good showing of rarities made it an exciting fall for most birders. A GREEN VIOLETEAR photographed at a feeder in St. Clair County was a first record for the state. Unfortunately it stayed only one day and was seen only by the homeowners. Other one-day wonders were a gorgeous FORK-TAILED FLYCATCHER, the state's third, photographed in Rock Island Co. in November and a SAGE THRASHER, the state's fourth, photographed and seen by many at Northerly Island on Chicago's lakefront in November. An INCA DOVE photographed at Glenview is the second for the state, if accepted by the records committee. This is another species spreading north out of the southwest. MOTTLED DUCKS in Clinton and Monroe Co. were photographed (both continuing from July) and continue a developing pattern of small numbers of mostly late summer/fall records for this southern wanderer. The first record in Illinois was only in 2004. Other impressive rarities included a BROWN PELICAN continuing from summer through August at Two Rivers NWR, a SWALLOW-TAILED KITE in Monroe Co. in August, a PRAIRIE FALCON and a RUFF at Lake Shelbyville in September, and a GLAUCOUS-WINGED GULL at Winthrop Harbor in October. Carlyle Lake produced its usual suite of rarities including a November PACIFIC LOON, a NEOTROPIC CORMORANT continuing into September, a ROSEATE SPOONBILL near Vandalia late September through early October, a LONG-TAILED JAEGER in early October, and an adult LITTLE GULL in late October to November. Landbirds produced fewer significant rarities, but there was a SAY'S PHOEBE in Sangamon County in October, a SPRAGUE'S PIPIT in DuPage Co. at the end of October, and a LARK BUNTING at Montrose in August.

Ducks through Hawks

Waterfowl migration was slow. Numbers in October built normally, but the unrelenting warmth of November kept

numbers low through the end of the period. An impressive single day count of over 1000 Tundra Swans came from Illinois Beach State Park in late November. There were good counts (100+) at the same time in Will Co. and Carroll Co. Numbers of dabbling ducks were generally unimpressive, but there were good counts of all of the regular diving ducks. Scoters were scattered across the landscape in small numbers. There were several inland reports of multiple Black Scoters. Red-necked and Western Grebes made a good showing downstate, but there was only a single Pacific Loon report, and no significant counts of Red-throated Loons. An impressive 251 Common Loons were in Richland County in mid-November. As usual there were a number of counts of over 1000 American White Pelicans from large reservoirs in southern Illinois and along the Illinois and Mississippi Rivers. The 18,000 from Mason County in October is a record count for the state. There were several impressive Double-crested Cormorant counts from downstate reservoirs and Lake Michigan. Heron counts were good, with Calhoun County seemingly the epicenter this fall. Two October *Plegadis* ibises were the only reports. The hawk watches at Illinois Beach and Greene Valley continue to provide valuable data on hawk movements through the state, but numbers were not particularly impressive at either site. It was a poor year everywhere for Broad-winged Hawks. Other hawk species seemed to be in normal to slightly below normal numbers.

Rails through Woodpeckers

Rail migration may have been poor, but certainly was not much noted this fall. The high counts of both Sora and Virginia Rails were low by recent standards, and Yellow and King Rails were poorly reported. Sandhill Crane migration was late and only one count over 1000 birds was reported. Movement peaked in the latter half of November and continued into early December. A Whooping Crane spent a couple of weeks in Winnebago Co. Shorebird migration was poor almost everywhere because of high water levels. Two jaegers were reported, a Parasitic from Lake Michigan, and a Long-tailed from Carlyle Lake. Winter gulls arrived mostly late, with few reports before November. Winthrop Harbor was, as is now typically the case, the best place for rare gulls. Besides the Glaucous-winged Gull there were 2 California Gulls there, as well as good counts of Thayer's and Lesser Black-backed

only *Larus* of note. Sabine's Gulls were present as usual on downstate reservoirs in September and well into October. One in Grundy Co. was a bit more unexpected. Even more unexpected was a Black-legged Kittiwake at the same site and time in mid-September. Another kittiwake was at Clinton Lake in late November. Tern migration was poor with only moderate high counts. Short-eared Owls were in somewhat lower numbers than in recent years, especially along the Lake Michigan lakefront. Long-eared Owls had appeared in small numbers by the end of the period; however, I received no reports of Saw-whet Owls. The Common Nighthawk migration was unimpressive, but small numbers lingered until late October. A record count of 3340 Chimney Swifts came from Evanston in late October; once again this species was recorded into November. Ruby-throated Hummingbirds had a fairly typical migration, but no Rufous or other *Selasphorus* hummingbirds were reported. Migrations of both Yellow-shafted Flicker and Yellow-bellied Sapsucker were pretty ordinary, without good high counts.

Passerines

Migration was generally slow this fall. Flycatcher counts were generally poor, but the Fork-tailed Flycatcher and two Scissor-tailed Flycatchers were the highlight of the fall. Vireo counts and timing were pretty typical. Good swallow concentrations were reported for most species, and impressive Tree Swallow counts came from Carlyle Lake, and along the Mississippi River in Hancock County. Other than some pre-dawn counts of migrating Swainson's Thrushes, thrush counts were poor. Again, Gray Catbirds lingered into December along the Chicago lakefront, but in smaller numbers than last year. The waxwing migration had only moderate high counts. Warbler migration was poor, with few high counts and few early dates. Most species did not arrive until the end of August, but a number of species lingered well into October and there were reports of at least thirteen species into November. With few fallouts, there were no notable counts of sparrows. The rarer grassland sparrows were in good numbers, but with few high counts. Harris's Sparrow reports were concentrated in the last week of October, with at least seven birds reported during that period. I received no other reports of the species. There was a single Smith's Longspur report at Lake Shelbyville. Lapland Longspurs arrived along the Lake Michigan lakefront in the latter half of September, and there were good counts in inland agricultural areas in November. Snow Buntings on the other hand were poorly reported.

Irruptive Species

The hawk watches at Illinois Beach and Greene Valley both had ordinary to low numbers of Rough-legged Hawks and Northern Goshawks. There were few reports of either species away from the hawk watches. After two consecutive outstanding seasons, Northern Shrikes were poorly reported this fall; observers reported only a handful away from the Lake County lakefront. Red-breasted Nuthatches occurred in moderate numbers in good conifer areas where they winter; few migrants were reported from other areas, beginning in early September. After last year's record invasion of winter

finches, unsurprisingly there were few reports of any irruptive species. Pine Siskins were poorly represented. They arrived late and in small numbers. No redpoll reports were received, and only a single Red Crossbill was reported. Purple Finches arrived early in small numbers; counts were generally unimpressive, but compared to the other winter finches, they were in moderate numbers and moderately widespread.

Organizations and Institutions:

CAS	Chicago Audubon Society (field trips)
CBCM	Chicago Bird Collision Monitors (data largely involving window-strikes at high rises in downtown Chicago)
COS	Chicago Ornithological Society (field trips)
DBC	DuPage Birding Club (field trips)
ENSBC	Evanston-North Shore Bird Club (field trips)
FMNH	Field Museum of Natural History
GVHW	Greene Valley Hawk Watch (data from Greene Valley FP, compiled by Bob Fisher)
IAS	Illinois Audubon Society (field trips)
IBHW	Illinois Beach Hawk Watch (data from IBSP, compiled by Vic Berardi)
IORC	Illinois Ornithological Records Committee
IOS	Illinois Ornithological Society (field trips)
NPBW	North Pond Bird Walk (weekly surveys at North Pond in Linc.P, led and compiled by Geoffrey A. Williamson)
SRAS	Starved Rock Audubon Society (field trips)
WGNS	Webster Grove Nature Study Society (field trips)

Individuals:

Amar A. Ayyash, Alan B. Anderson, Bill Anderson, Cornelius ("Connie") P. Alwood, David K. Antieau, Jill S. Anderson, Aaron Boone (ABe), Anna Buckardt (ABt), Alex B. Bloss, David Becher, Diann Bilderback (DBk), Frank K. Bennett, John Bergstrom, Maury H. Brucker, Michael J. Baum, Nancy P. Bent, Richard Biss, Richard G. Bjorklund, Samuel B. Burckhardt, Steven D. Bailey, Sigurd N. Bjorklund, H. David Bohlen, Tim Balassie (TBe), Tamara Brenner (TBr), Bob Carper, Charles Crawford, Jackie Chain, Matthew M. Cvetas, Paul Costoff, Paul R. Clyne, Rena Cohen, Alfred G. Dierkes, Carl & Penelope DauBach, Diana Doyle, Donald R. Dann, Glenn Davis, John Duran, Paul K. Doughty, Richard J. DeCoster, Sheryl L. DeVore, Tim J. Dever, Joshua I. Engel, Robert Erickson, Barb Fotland, Karen D. Fisher, Matthew E. Fraker, Pete Fenner, Richard Fishel, Richard D. Funk, Robert E. Fisher, Sean Fitzgerald (SFd), Sue Friscia (SFa), Tyler D. Funk, Caleb E. Gordon, Eric D. Gyllenhaal, Jerry Goldner, Joel R. Greenberg, Urs W. Geiser, W. Sullivan Gibson, Bill Hubick, C. Leroy Harrison, Don Hartzler, Frank R. Holmes, Glen Hawley, Jed H. Hertz, Kanae Hirabayashi, Matt Hale, Michael J. Hogg, Robert D. Hughes, Stephen Hager, Ted Hartzler, Marshall Iliff, David B. Johnson, Lee G. Johnson, Dan M. Kassebaum, Tim L. Kuesel, Demetri Lafkas, Gregory S. Lambeth, Karen M. Lund, Nolan A. Lameka, Thomas B. Lally, Anita L. Morgan, Barbara Meding, Charlene Malone, Cynthia K. McKee, David and Mary Anne Marjamaa, David Mott (DMt), Don Mullison (DMn), D. James Mountjoy, Fran

Morel, Jim Malone, John D. McKee, Keith A. McMullen, Karen K. Mansfield, Mark Messerle, Michael A. Madsen, Mary Lou Mellon, Matt McKim-Louder, Peter A. Moxon, Robert Montgomery, Robert A. Morgan, Travis A. Mahan, Walter J. Marcisz, Luis G. Muñoz, Greg Neise, Dick Paulson, John H. Purcell, Linda Padera, Roy E. Peterson, Tatiana Pequeño, Ari Rice, John Romano, Kevin B. Richmond, Lisa Rest (LRt), Lee Ramsey (LRy), Michael L. Retter, Roger C. Reason, William M. Rudden, Anne Straight (AST), Alan F. Stokie, Andrew P. Sigler, Beth Simkins, Beau J. Schaefer, Douglas F. Stotz, Darrell J. Shambaugh, Dianna Sunblade,

Eric E. Secker, Greg Schechter, Joanna Shipley; Jeff A. Smith, Jeffrey R. R. Skrentny, Jim S. Soluin, Leonard Stanley, Mark S. Seiffert, Robert E. Shelby, Randy L. Shonkweiler, Stephen G. Spitzer, Stanley W. Stec; Wesley S. Serafin, Craig A. Taylor, Craig B. Thayer, David L. Thomas, Jeffrey Thomas, Kathleen Taylor, Perry Thoms, Julie Vaness, Barbara C. Williams, Ben Winger, Cathy Walz, Christine L. Williamson, David Weth, David E. Willard, Daniel T. Williams, Emily Walker, Eric W. Walters, Geoffrey A. Williamson, Jane G. Ward, Matthew J. Winks, Jerry Zamirowski, Jody Zamirowski.

The following abbreviations have been used throughout this report:

EA	= Earliest Arrival	Arb	= Arboretum	NC	= Nature Center
LD	= Latest Departure(s)	CA	= Conservation Area	NP	= Nature Preserve
MC	= Maximum Count(s)	Cem	= Cemetery	Pk	= Park
ad(s)	= adult(s)	Co(s)	= County(ies)	Pra	= Prairie
et al.	= and others	CP	= County Park	Pr	= Preserve
♀	= female(s)	Crk	= Creek	R	= River
imm	= immature	FP	= Forest Preserve	SF	= State Forest
juv(s)	= juvenile(s)	H	= Harbor	SI	= Slough
♂	= male(s)	I	= Island	SF&WA	= State Fish & Wildlife/ Waterfowl Area
m.ob.	= many observers	L	= Lake	SNA	= State Natural Area
*	= documented record	L&D	= Lock & Dam	SP	= State Park
ph	= photo(s)	M	= Marsh		
resp	= respectively	NA	= Natural Area		

AllertonPk	= Allerton Park (Piatt Co)	Kankakee	= Kankakee (Kankakee Co)
AlmondMarsh	= Almond Marsh Forest Preserve (Lake Co)	KLMSNA	= Kidd Lake Marsh State Natural Area (Monroe Co)
AmnBot	= American Bottoms (Monroe County)	LaSalleL	= LaSalle Lake State Fish & Wildlife Area (LaSalle Co)
BannerM	= Banner Marsh (Fulton & Peoria Cos)	LCal	= Lake Calumet (Cook Co)
BuseyWds	= Busey Woods Pk, Urbana (Champaign Co)	LDDP	= Lake Decatur dredge ponds (Macon Co)
CapSauers	= Cap Sauers Holdings Nature Preserve (Cook Co)	LowdMil	= Lowden-Miller State Forest (Ogle Co)
CarLL-C	= Carlyle Lake (Clinton Co)	LShel	= Lake Shelbyville (Moultrie Co)
CarLL-F	= Carlyle Lake (Fayette Co)	MArb	= Morton Arboretum (DuPage County)
CBG	= Chicago Botanic Garden (Cook Co)	Maz/Braid	= Mazonia/Braidwood State Fish & Wildlife Area (Grundy/Will/Kankakee Cos)
Champaign	= Champaign (Champaign Co)	McGinnisSl	= McGinnis Slough (s.w. Cook Co)
Chau	= Lake Chautauqua National Wildlife Refuge (Mason Co)	MeadbrkPk	= Meadowbrook Park, Urbana (Champaign Co)
Chi	= Chicago - excl. Jackson Park, Lincoln & Grant Parks & Lake Calumet (Cook Co)	Midewin	= Midewin National Tallgrass Prairie (Will Co)
ClintonL	= Clinton Lake (DeWitt Co)	MidSav	= Middlefork Savanna Forest Preserve (Lake Co)
ConnerL	= Conner Lake (Monroe Co)	Miss. R	= Mississippi River
EForkL	= East Fork Lake, Olney (Richland Co)	MomenceWet	= Momence Wetlands (Kankakee Co)
Emiquon	= The Nature Conservancy Emiquon Preserve (Fulton Co)	Montrose	= Montrose Harbor, Lincoln Park, Chicago (Cook Co)
ESTL	= E. St. Louis (St Clair Co)	NoP	= North Pond, Lincoln Park, Chicago (Cook Co)
Fermi	= Fermilab (Du Page Co)	Palos	= Palos area (s.w. Cook Co)
GLPSP	= Goose Lake Prairie State Park/State Natural Area (Grundy Co)	PaulDoug	= Paul Douglas Forest Preserve (Cook Co)
GreeneVal	= Greene Valley Forest Preserve (DuPage Co)	PRSNA	= Prairie Ridge State Natural Area (Jasper & Marion Cos)
GreenR	= Green River State Wildlife Area (Lec Co)	RendL	= Rend Lake (Jefferson Co)
Guzy Pra	= Margaret Guzy Pothole Wetlands Nature Preserve (Shelby Co)	Rckfd	= Rockford (Winnebago Co)
HennepinL	= Hennepin-Hopper Lake Restoration Area (Putnam Co)	RollinsSav	= Rollins Savannah Forest Preserve (Lake Co)
HL	= Horseshoe Lake State Park (Madison Co)	SantaFe	= Santa Fe Bottoms (Clinton Co)
HomerL	= Homer Lake Forest Preserve (Champaign Co)	Spfld	= Springfield (Sangamon Co)
IBSP	= Illinois Beach State Park (Lake Co)	StarvedRock	= Starved Rock State Park (LaSalle County)
Jarvis	= Bill Jarvis Migratory Bird Sanctuary, Lincoln Pk, Chicago (Cook Co)	TwoRivers	= Two Rivers National Wildlife Refuge (Calhoun Co)
JP	= Jackson Park and vicinity, Chicago (Cook Co)	Wauk	= Waukegan (usually Waukegan Harbor area, Lake Co)
		WinthropH	= Winthrop Harbor (Lake Co)

2009 Fall Season Report

Greater White-fronted Goose

EA: 27 Sep, CarlL-C (DMK, MSS). MC: 200, CarlL-C, 31 Oct (DMK, MSS); 72, HennepinL, 27 Nov (DFS).

Snow Goose

EA: 5 Sep (3), CarlL-C (DMK, MSS). MC: 10000, Pyramid SP (Perry Co), 14 Nov (TAM); 2000, CarlL-C, 28 Nov (DMK, MSS).

Ross's Goose

EA: 27 Oct (2), *Kankakee* (JHH). MC: 11, E1 Paso Sewage Ponds (Woodford Co), 21 Nov (MJW); 9, *Peoria*, 28 Oct (MHB); 4, CarlL-C, 7 Nov (DMK, MSS).

Cackling Goose

EA: 28 Sep (2), Bloomington (McLean Co) (MJW); 30 Sep, NoP (GAW, NPBW). MC: 4800, Rochelle (Ogle Co), 28 Nov (DJS); 600, L Mendota (LaSalle Co), 12 Nov (JDM, CKM); 600, HennepinL, 13 Nov (DFS).

Canada Goose

MC: 3000+, *Lake*, 31 Oct (KAM); 2852, *Fermi*, 24 Nov (SFd); 1475, *Kane*, 20 Nov (DFS); 1000, *Lake Forest* (Lake Co), 11 Nov (ABt).

Mute Swan

MC: 45, BannerM, 9 Nov (EW); 33, Channahon (Will Co), 14 Nov (JAS).

Trumpeter Swan

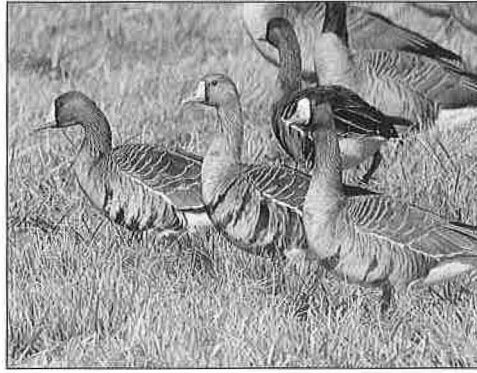
MC: 18, Spring L (Carroll Co), 29 Nov (DTW).

Tundra Swan

EA: 20 Oct, MidSav (REP); 30 Oct (5), Freeport (Stephenson Co) (DTW); 31 Oct (7), IBSP (EWW). MC: 1036, IBSP, 29 Nov (IBHW); 175, Maz/Braid, 28 Nov (JHH); 147, Spring L (Carroll Co) (DTW).

Wood Duck

MC: 105, LShel, 3 Oct (KAM); 98, RendL, 28 Aug (TJD).



Greater White-fronted Geese. Fermilab, DuPage County. 4 November 2009.

Photo by Mark Bowman.

Gadwall

EA: 6 Aug, RollinsSav (SBB); 30 Aug, CarlL-C (DMK, MSS). MC: 800, CarlL-C, 31 Oct-1 Nov (DMK).

American Wigeon

EA: 2 Jul, KLMSNA (DMK, MSS). MC: 200, CarlL-C, 31 Oct (DMK).

American Black Duck

EA: 27 Aug, Rainbow Beach (Chi) (DFS). MC: 33, Chau, 13 Nov (RGB, SNB); 20, BannerM, 9 Nov (EW).

Mallard

MC: 3000, Peacock M (Will Co), 2 Nov (ABe); 1588, Chau, 13 Nov (RGB, SNB).

MOTTLED DUCK

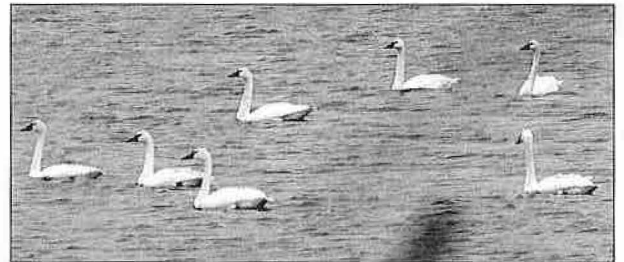
SantaFe, 30 Jul-5 Aug (DMK, MSS); 16 Aug, KLMSNA (C&PD).

Blue-winged Teal

EA: 2 Aug (12), Zion (Lake Co) (EWW). MC: 416, KLMSNA, 1 Nov (C&PD); 300, CarlL-C, 29-30 Aug (DMK, MSS). LD: 23 Nov, Humboldt Pk (Chi) (SBB).

Northern Shoveler

EA: 2 Aug, CarlL-C (DMK). MC: 1500, CarlL-C 31 Oct (DMK); 900+, Emiquon, 30 Oct (KAM).



Tundra Swans. McGinnis Slough, Cook County. 16 November 2009. Photo by Mark Bowman.

Abbreviations, continued

A number in parentheses () indicates the number of birds observed at a particular location or on a particular date. No number signifies single birds. Place names given in *italic type* are counties. The sequence of records within species accounts, except for maximum counts, begin in northwest Illinois (Jo Daviess, Carroll and Whiteside counties), proceed to the east, then continue back and forth across the state in a systematic pattern with the southernmost records at the end.

Transparent directionals (n.=north(ern), ne. = northeast(ern), etc.), and including c.= central, are used where applicable. Words referring to natural features are generally not abbreviated in names of residential communities (thus Forest Park, Fall Creek, Garden Prairie, etc.).

Headings for species requiring IORC (Illinois Ornithological Records Committee) review in parts of Illinois or in some plumages are underlined, while those for species requiring review of all records are CAPITALIZED AND UNDERLINED. Records pending IORC review are enclosed in square brackets []. The IORC review list can be viewed at the IOS/IORC website, <http://www.illinoisbirds.org/iorc.html>. Noteworthy dates and sites of occurrence

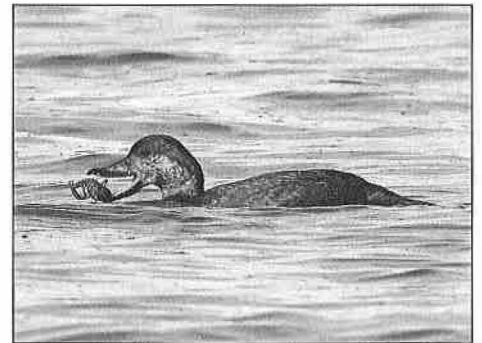
and remarkably high counts for the state as a whole or for particular regions of the state are underlined and boldfaced, and some further editorial remarks are boldfaced.

Remarks on the historical significance of records aim to be valid for the corpus of data published in H. David Bohlen's 1989 *Birds of Illinois* and the seasonal summeries in the Illinois journals *Illinois Birds and Birding* (summer 1984 – spring 1991) and *Meadowlark* (summer 1991 – present). Data from other sources may have bearing on the validity of these remarks.

The 2003 DeLorme Illinois Atlas & Gazetteer has been used as a standard for spelling of place names for sites included therein. Some records not printed here may still be under IORC (Illinois Ornithological Records Committee) review; when completed, they will appear in the published IORC report. As standard policy, all observers, regardless of experience, must fully document all unusual observations. Easy to use documentation forms are available from IORC Secretary, Doug Stotz, Environment and Conservation Program, Field Museum of Natural History, Roosevelt Road and Lake Shore Drive, Chicago, IL 60615. Completed documentation forms of "listed" species should be submitted to the IORC Secretary within one week of the observation.



Two Black Scoters.
Lake Shabonna,
DeKalb County. 11
November 2009.
Photo by Mark Bowman.



Black Scoter eating
crayfish. Lake Shabonna,
DeKalb County.
11 November 2009.
Photo by Mark Bowman.

Northern Pintail

EA: 18 Aug (2), CarlL-C (DMK). MC: 135, Peacock M (Will Co), 25 Nov (ABe).

Green-winged Teal

EA: 22 Aug (4), CarlL-C (DMK, MSS). MC: 2706, Chau, 13 Nov (RGB, SNB); 300+, Emiquon, 30 Oct (KAM); 198, KLMSNA, 23 Sep (C&PD); 145, Peacock M (Will Co), 25 Nov (ABe).

Canvasback

EA: 24 Jul, RendL (LS)- summering?; 8 Aug, New Athens (St. Clair Co) (TJD); 17 Oct, LCal (WJM). MC: 2700, Miss.R, Hancock, 19 Nov (AGD); 700, CarlL-C, 29 Nov (DMK, MSS).

Redhead

EA: 21 Aug, El Paso (Woodford Co) (TH); 5 Sep, Hancock (CAT, TLK). MC: 400, IBSP, 24 Nov (MJW).

Ring-necked Duck

EA: 9 Oct, Glacial Pk (McHenry Co) (BF). MC: 4000, CarlL-C, 21-22 Nov (DMK, MSS); 1800, Miss.R, Hancock, 27 Nov (AGD).

Greater Scaup

EA: 31 Oct, IBSP (KAM, MSS). MC: 2000, IBSP, 24 Nov (MJW).

Lesser Scaup

EA: 1 Sep, Wolf L (Chi) (WJM). MC: 13500, Miss. R, Hancock, 14 Nov (AGD); 4000, CarlL-C, 31 Oct & 8 Nov (DMK, MSS).

Harlequin Duck

EA: 28 Nov (♀), Candlewick L (Boone Co) (EWW).

Surf Scoter

EA: 16 Oct, WinthropH (PKD); 16-31 Oct (2), EForkL (CLH); 17 Oct (5), CarlL-C (DMK, MSS); 17 Oct, IBSP (EWW). MC: 6, CarlL-C, 31 Oct (DMK, MSS).

White-winged Scoter

EA: 31 Oct, IBSP (KAM, MSS). MC: 8, IBSP, 6 Nov (JRRS). LD: 27 Nov, CarlL-C (DMK).

Black Scoter

EA: 18 Oct (3), Wauk (JT). MC: 5, IBSP, 24 Nov (MJW); 5, ShabbonaL (DeKalb Co), 8-28 Nov, (DJS, SRAS, m. ob.); 3, Little Calumet R (Cook Co) (CAT, TLK, SFa); 3, Upper Peoria L (Peoria Co), 26 Nov (MJW). Others: 20-29 Nov, Springbrook Pra FP (DuPage Co) (ABe, UWG et al.).

Long-tailed Duck

EA: 24 Oct, IBSP (JRRS, GN, PKD); 21 Nov, CarlL-C (DMK). MC: 7, Gillson Pk (Cook Co), 28 Nov (SBB). Others: 28 Nov (♀), CandlewickL (Boone Co)(EWW).

Bufflehead

EA: 13 Oct, Coal City (Grundy Co) (JHH); 20 Oct (2), Calumet Pk (Chi) (WJM); 25 Oct (3), Wauk (EWW). MC: 120, CarlL-C, 29 Nov (DMK, MSS); 50, IBSP, 6 Nov (JRRS); 44, CandlewickL (Boone Co) 28 Nov (EWW), 28, Miss.R, Hancock, 27 Nov (AGD).

Common Goldeneye

EA: Summering ♂ remained until 4 Oct, LCal, Wolf L (Chi) (WJM); 1 Nov, Lincoln Pk (Chi) (LGM); 7 Nov, CarlL-C (DMK, MSS). MC: 200, CarlL-C, 29 Nov (DMK, MSS); 40, WinthropH, 28 Nov (SBB); 34, Peoria (Peoria Co), 30 Nov (TH).

Hooded Merganser

MC: 91, Saganashkee SI (Cook Co), 29 Nov (DFS).

Common Merganser

EA: 17 Oct, IBSP (JRRS, PKD, m. ob). MC: 40, Montrose, 15 Nov (FM).

Red-breasted Merganser

EA: 17 Oct, WinthropH (KAM, et al.); 1 Nov, ClintonL (TH, MEF). MC: 1191, Montrose, 25 Nov (GAW); 350, WinthropH, 27 Nov (JRRS); 200, CarlL-C, 29 Nov (DMK).

Ruddy Duck

MC: 2150, Miss.R, Hancock, 27 Nov (AGD); 1500, CarlL-C, 31 Oct-1 Nov (DMK, MSS).

Northern Bobwhite

MC: 20, 18 Bottoms (Franklin Co), 30 Sep (LS); 15, Edwards, 19 Nov (RES); 13, Pyramid SP (Perry Co), 14 Nov (IOS).

Gray Partridge

No reports again.

Ring-necked Pheasant

MC: 22, Kankakee, 4 Nov (JHI).

Greater Prairie-Chicken

MC: 25, PRSNA, 2 Nov (RES).

Wild Turkey

MC: 39, e. Kankakee (JHH).

Red-throated Loon

EA: 5-26 Nov, Sangamon (HDB). MC: 2, CarlL-C, 8 Nov (JRRS, KKM); 2, Gillson Pk (Cook Co), 16 Nov (JRRS, GN).

PACIFIC LOON

CarlL-C, 6-14 Nov (JAS, PAM, DMK, MSS, TAM, KAM, CM, WGNSS).

Common Loon

EA: 12 Oct, Sangamon (HDB); 18 Oct, WinthropH (SFi). MC: 251, EForkL, 17 Nov (CLH); 40, CarlL-C, 22 Nov (DMK, MSS); 40, RendL (Franklin Co), 21 Nov (LS, DMN); 31, ClintonL, 20 Nov (MEF).



Long-tailed Duck. Foster Avenue Beach,
Cook County. 2 November 2009.
Photo by Steve Spitzer.

Pied-billed Grebe

MC: 98, ClintonL, 1 Nov (MJF); 80, CarlL-C., 24 Oct (DMK).

Horned Grebe

EA: 10 Oct, Calumet Pk (Chi) (WJM). MC: 60, RendL (Franklin Co), 21 Nov (LS, DMn); 50, CarlL-C, 29 Nov (DMK, MSS); 33, Rainbow Beach (Chi), 20 Nov (JRRS, GN).

Red-necked Grebe

EA: 14 Oct-1 Nov, EForkL (CLH:ph); 14 Oct, Sangamon (HDB). LD: 23 Nov, Montrose (GAW, RDH). Others: 28 Oct, Bloomington (McLean Co) (MJW); 7 Nov, JP (SBB); 8-10 Nov, ShabbonaL (DeKalb Co) (DJS, SRAS, m.ob.).



Red-necked Grebe. White Oak Park, McLean County. 28 October 2010. Photo by Matt Fraker.

Co), 15 Sep (KAM); 2500, TwoRivers, 29 Jul (KAM); 2000, Chau, 29-30 Aug (TH, MML); 2000, Fulton, 9 Jul (MJB); 1400, RendL, 6 Oct (LS). LD: 29 Nov (12), CarlL-C (DMK, MSS); 27 Nov (2), Nauvoo (Hancock Co) (AGD); 27 Nov (300), HennepinL (DFS); locally into Dec.

BROWN PELICAN

TwoRivers, 23 Jul-29 Aug (DMK:ph, JRRS:ph, MSS, KAM, DB).

American Bittern

EA: 30 Aug, Wauk (AFS, RE). MC: 3, 18 Bottoms (Franklin Co), 30 Sep (LS); 2, CarlL-C, 6 Aug (DMK). LD: 1 Nov, Clinton (DMK); 31 Oct, Montrose (MMC).



Juvenile Tricolored Heron. Carlyle Lake, Clinton County. 23 August 2009. Photo by Dan Kassebaum.



Western/Clark's Grebe. Carlyle Lake, Clinton County. 25 October 2009. Photo by Dan Kassebaum.



First of two Eared Grebes. White Oak Park, McLean County. 28 October 2010. Photo by Matt Fraker.



Second of two Eared Grebes. White Oak Park, McLean County. 28 October 2010. Photo by Matt Fraker.

Eared Grebe

EA: 24 Sep, Bloomington (McLean Co) (MJW). MC: 3, Monmouth (Warren Co), 23-25 Sep (DJM, MJB, KAM); 2, Bloomington (McLean Co), 28 Oct (MJW, TH). Others: 10 Oct, EForkL (CLH). Another there on 13 Oct thought to be a different bird.

Western Grebe

EA: 19 Jul-6 Aug, CarlL-C (DMK, MSS, et al.). MC: 2, LShel, 28-29 Nov (TAM, DMK, MSS, et al.) (one of birds with orange bill, possibly Clark's Grebe). Others: 25 Oct, CarlL-C (DMK, TAM, CLH); 5 Nov, Wauk (EWW); 8 Nov, Illinois R (Woodford Co) (MJW); 6-11 Nov, CarlL-C. (JAS, PAM, DMK, MSS, JRRS, KM, DB et al.).

NEOTROPIC CORMORANT

CarlL-C, 30 Jul-5 Sep (DMK:ph, MSS, KAM, et al.); 1-2 Aug, RollinsSav (RDH, CBT, LRt, SDB); this bird moved between Almond M and RollinsSav beginning 28 Jun and was seen by dozens of observers).

Double-crested Cormorant

MC: 3225, CarlL-C, 1 Oct (KAM); 1450, Wauk, 23 Nov (EWW); 1015, RendL (KAM); 884, Chau, 23 Oct (RGB, SNB); 604, ClintonL, 29 Sep (MJF).

American White Pelican

MC: 18,071, Chau and Clear L (Mason Co), 10 Oct (RGB, SNB); 5600, BigL (Brown



Great Egret with mink. South side of Chicago at the wetland near the Torrence Avenue Ford Assembly Plant, Cook County. 4 September 2009. Photo by Brian Tang.

Least Bittern

MC: 2, PRSNA, 14 Aug (CLH); 2, Monroe, 24 Aug (C&PD). LD: 13 Sep, CarlL-C (DMK, MSS).

Great Blue Heron

MC: 200, TwoRivers, 20 Aug (MJW).

Great Egret

MC: 1000+, Calhoun, 8 Aug (KAM), Stump L (Jersey Co) (EWW); 507, KLMSNA, 9 Aug (C&PD); 451, McGinnisSl, 22 Sep (CAT, TLK). LD: 23 Nov, Wabash (CLH, RES); 13 Nov, EvergreenL (Woodford/McLean Cos) (MJW); 2 Nov, HL (FRH).

Snowy Egret

MC: 46, TwoRivers, 1 Aug (KAM); 30, Alton (Madison Co), 15 Aug (EWW, WSS); 25, Monroe, 31 Jul (TAM); 18, Jake Wolf Fish Hatchery (Mason Co), 3 Sep (RGB, SNB); 10, TwoRivers, 20 Aug (MJW). LD: 18 Oct (2), Emiquon (MJB); 5 Oct, HL (FRH); 25 Sep, CarlL-C (DMK).

Little Blue Heron

MC: 85, Alton (Madison Co), 15 Aug (EWW, WSS); 75, Monroe, 31 Jul (TAM); 30, CarlL-C, 26 Aug (DMK, MSS). LD: 14 Oct, HL (FRH). Others: 25 Jul, Yorktown (Henry Co) (EWW).

Tricolored Heron

23 Aug-6 Sep (imm), CarlL-C (DMK, MSS, CA, m. ob.).



Roseate Spoonbill. Vandalia, Fayette County. 24 September 2009. Photo by Wes Serafin.



Roseate Spoonbill. Vandalia, Fayette County. 23 September 2009. Photo by Greg Neise.

Cattle Egret

MC: 105, Monroe, 22 Sep (C&PD); 50, Emiquon, 8 Aug (UWG); 11, ESTL, 13 Aug (KAM). LD: 15 Nov (3), ClintonL (TH); 18 Oct (4), Emiquon (MJB).

Green Heron

MC: 31, KLMSNA, 9 Aug (C&PD); 19 Jake Wolf Fish Hatchery (Mason Co), 14 Aug (RGB, SNB); 13, Salamander Springs (Kane Co), 23 Aug (NPB).

Black-crowned Night-Heron

MC: 36, LCal, 2 Aug (SBB).

Yellow-crowned Night-Heron

MC: 4, LCal, 25-29 Aug (SBB, WJM); 3, Sugar River FP (Winnebago Co), 22-23 Aug. (DTW, m. ob.); LD: 26 Sep, RendL (Franklin Co) (LS, PT); 2 Sep, Evanston (Cook Co) (MMC); 30 Aug (2), LCal (WJM, COS).

***Plegadis* sp**

Springbrook Pra FP (DuPage Co), 10 Oct (DL); Emiquon, 18 Oct (KBR, MJB).

ROSEATE SPOONBILL

Vandalia (Fayette Co), 22 Sep-3 Oct (Mary Ann Hoeffliger, DMK, MSS:ph, GN:ph, CAT:ph, m. ob.).

Black Vulture

MC: 9, KLMSNA, 11 Sep (C&PD); 3, Johnson, 23 Oct (MSS). Others: Forbes SP (Marion Co), 24 Aug (CLH, RES).

Turkey Vulture

MC: 297, GreeneVal, 11 Oct (GVHW); 85, IBSP, 10 Oct (IBHW); 80, CarlL-C., 11 Oct (MK, MSS); 73, ClintonL, 30 Oct (MJF).

Osprey

MC: 23, IBSP, 28 Sep (IBHW); 15, CarlL-C, 30 Aug (DMK, MSS). LD: 13 Nov, Bloomington (McLean Co) (MJW).

SWALLOW-TAILED KITE

AmnBot, 21 Aug (C&PD).

Mississippi Kite

MC: 3, Fort Massac SP (Massac Co), 3 Aug (DDy). LD: 16 Sep (juv), Rckfd (JB).

Bald Eagle

MC: 18, HennepinL, 20 Nov (TH); 18, Chau, 23 Oct (RGB, SNB).

Northern Harrier

MC: 25, PRSNA, 24 Nov (RES); 22, IBSP, 31 Oct (IBHW); 20, CarlL-C., 11, 12, 18 Oct (DMK, MSS).

Sharp-shinned Hawk

EA: 29 Aug, CarlL-C (TAM). MC: 384, IBSP, 24 Oct (IBHW); 299, IBSP, 10 Oct (IBHW); 172, IBSP, 2 Nov (IBHW); 44, GreeneVal, 11 Oct (GVHW).

Cooper's Hawk

MC: 14, IBSP, 2 Nov (IBHW); 8, GreeneVal, 11 Oct (GVHW); 6, Lincoln Pk (Chi), 4 Oct (GAW).

Northern Goshawk

EA: 26 Sep, IBSP (IBHW); 1 Oct, MidSav (REP); 11 Oct, GreeneVal (GVHW). MC: 2, GreeneVal, 15 Nov (JAS, GVHW).

Red-shouldered Hawk

MC: 5, IBSP, 31 Oct (IBHW); 5, GreeneVal, 2 Nov (GVHW).

Broad-winged Hawk

MC: 170+, EForkL, 28 Sep (CLH); 12, GreeneVal, 3 Oct (GVHW); 8, CarlL-C, 16 Aug (DMK). LD: 5 Nov, GreeneVal (GVHW).

Swainson's Hawk

MC: 5, McHenry, 23 Aug (RAM, ALM). LD: 30 Oct, Mason (KAM:ph, MSS); 30 Aug (3), McHenry (RAM, ALM).

Red-tailed Hawk

MC: 210, IBSP, 2 Nov (IBHW); 120, CarlL-C, 11 Oct (DMK, MSS); 79, GreeneVal, 31 Oct (GVHW).

Rough-legged Hawk

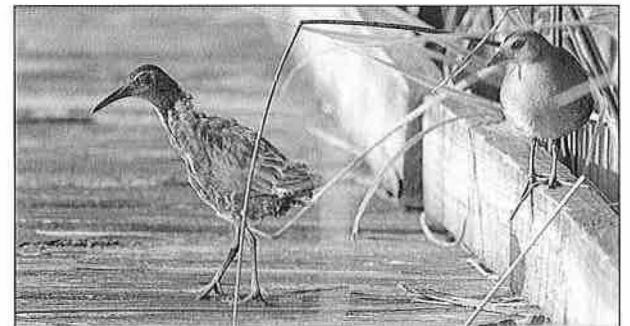
EA: 31 Aug, GreeneVal (GVHW); 3 Oct, IBSP (IBHW); 8 Oct, Knox (MJB). MC: 15, IBSP, 2 Nov (IBHW).

Golden Eagle

EA: 4 Oct, CarlL-C (DMK, MSS, CLH); 14 Oct, IBSP (IBHW). LD: 21 Nov, GreeneVal (GVHW); 20 Nov, McHenry (EES). Others: 24 Oct, Clinton (KAM).

American Kestrel

MC: 20, CarlL-C, 18 Oct (DMK, MSS).



Virginia Rail, left, with Sora. 5 August 2009. Goose Lake Prairie State Natural Area, Grundy County. Photo by Brian Tang.

Merlin

EA: 29 Aug, IBSP (IBHW). MC: 88, IBSP, 24 Oct (IBHW); 6, GreeneVal, 24 Oct (GVHW).

Peregrine Falcon

MC: 65, IBSP, 28 Sep (IBHW); 15, GreeneVal, 28 Sep (GVHW).

PRAIRIE FALCON

LShel, 22 Sep (KAM, MSS, REF, KDF).

Yellow Rail

LD: 4 Nov, PRNSA (RES); 1 Nov, Stirtz (Williamson Co) (LS).

BLACK RAIL

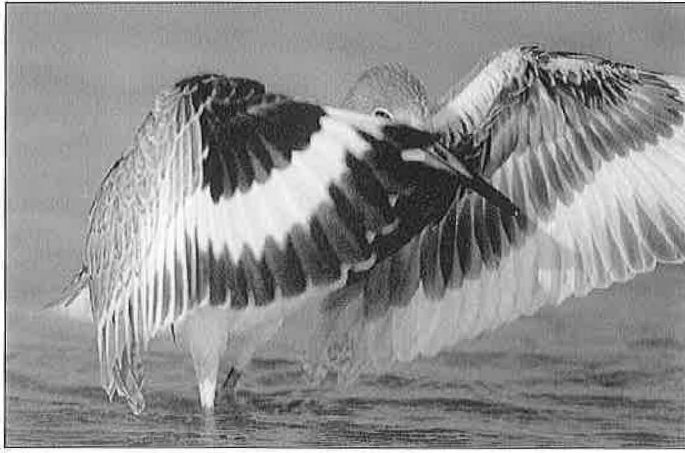
PRSNA (Marion Co), 24 Aug (CLH, RES); RendL, 28 Aug (LS*); Monroe (2), 4 Sep (C&PD).

King Rail

MC: 2, PRSNA, 12 Aug (RES). LD: 17 Aug, PRSNA (CLH).

Virginia Rail

MC: 4, Volo Bog SNA (Lake Co), 4 Sep (BH). LD: 24 Oct, LCal (WJM); 24 Oct, Chi (Loop) (spec. to FMNH)(CBCM).



Sora

EA: 14 Aug, Chi (Loop) (spec. to FMNH) (CBCM); 22 Aug, CarlL-C (DMK, MSS). MC: 7, ConnorL, 4 Oct (C&PD). LD: 30 Oct, Chi (Loop) (spec. to FMNH) (CBCM); 29 Oct, PRSNA (CLH); 3 Oct, Guzy Pra (TAM).

Common Moorhen

MC: 20, LCal (Hegewisch Marsh), 15 Aug (RLS); 7, see below; 5, HL, 15 Aug (EWW, WSS); 4, GreenR, 11 Sep (MJB). LD: 4 Nov, KLMSNA (C&PD); 1 Oct (7), LCal (Hegewisch Marsh) (WJM).

American Coot

MC: 25000, Emiquon, 8 Nov (JRRS).

Sandhill Crane

EA: 21 Aug (2), Zion (Lake Co) (EWW). MC: 2700, Hebron (McHenry Co), 7 Nov (EWW, WSS).

WHOOPIING CRANE

Nygren Wetland (Winnebago Co) (5), 15 Nov-4 Dec (DTW, m. ob.); 27 Nov, Schaumburg (Cook Co) (w/20 Sandhills) (Dave Coulter). One bird appeared at Jasper-Pulaski SF&WA in nw Indiana the next day. From the reintroduction program. Also, 20 ultralight led birds hatched the prior spring were led through Illinois, stopping in Winnebago 5-14 Nov, LaSalle 15-20 Nov, Livingston 20-26 Nov, Piatt 27-29 Nov, Cumberland 30 Nov - 3 Dec, & flew through Wayne 4 Dec. Sixteen of the birds took off of their own accord from LaSalle but were later caught up with by the ultralight team.

Black-bellied Plover

EA: 9 Jul, Wabash (CLH). MC: 9, Rainbow Beach (Chi), 17 Aug (DFS). LD: 6 Nov, HennepinL (MJB); 31 Oct, Montrose (MMC); 20 Oct, LDDP (TAM); 11 Oct, CarlL-C (DMK, MSS).

American Golden-Plover

EA: 16 Jul, Afton FP (DeKalb Co) (MAM); 26 Jul, Emiquon (MJB, KBR); 18 Aug, LShel (Shelby Co)(TAM). MC: 154, Momence sod farms (Kankakee Co), 9 Sep (JHH). LD: 8 Nov, HennepinL (MAM, APS); 17 Oct, WinthropH (EWW).



Willet. Montrose Harbor; Cook County.
14 August 2009. Photos by Jerry Goldner.

Semipalmated Plover

EA: 15 Jul, KLMSNA (CM, JM). MC: 31, Brown, 9 Aug (CAT, TLK); 30, CarlL-F, (IOS); 25, LShel, 25 Aug (TAM, TDF, RDF); 18, CarlL-C, 6 Sep (DKM, MSS); 18, LCal (130th St. Sewage Plant), 23 Aug (WJM, CAS). LD: 9 Oct, Montrose (SSP).

Piping Plover

EA: 17 Aug, Montrose (ABB). MC: 2, HL, 19 Aug (WMR, FRH). LD: 1-2 Sep, WinthropH (TBL, m. ob.); 6 Sep, CarlL-C (DMK, MSS).

Killdeer

MC: 1200, TwoRivers, 25 Jul (DMK, MSS); 1000, BigL (Brown Co), 8 Aug (KAM); 866, Momence sod farms (Kankakee Co), 16 Aug (GAW); 500+, Boone, 29 Aug (DTW); 300, HennepinL, 21 Nov (MJB).

Black-necked Stilt

MC: 30, BigL (Brown Co), 9 Aug (MJB, KBR); 8, KLMSNA, 24 Aug (C&PD); 6, Farina (Fayette Co), 24 Aug (CLH); 5, CarlL-F, 7 Sep (DMK, MSS).

American Avocet

EA: 5-10 Jul, Split Rock L (LaSalle Co)(DJS, MAM, m. ob.); 17 Jul, KLMSNA (DMK). MC: 28, TwoRivers, 21 Aug (MJW); 15, LaSalleL, 11 Aug (JDM, CKM); 9, Warren, 10 Sep (DJM, MJB); 5, ClearL (Mason Co), 7 Aug (RGB, SNB); 5, CarlL-C, 29-30 Aug (DMK, MSS); 5, KLMSNA, 18 Sep (C&PD). LD: 24 Oct (5), Montrose (LGM); 5 Oct (4), HL (FRH).

Spotted Sandpiper

EA: 29 Jun, Wabash (CLH). MC: 50, TwoRivers, 25 Jul (DMK, MSS); 29, Chau, 7 Aug (RGB, SNB); 26, LCal (130th St. Sewage Plant), 9 Aug (WJM, ENSBC). LD: 1 Nov, Montrose (LGM); 22 Oct, Bloomington (McLean Co) (MJW); 3 Oct, LShel (TAM et al.).

Solitary Sandpiper

EA: 30 Jun, Farina (Fayette Co)(SDB); 5 Jul, Jersey (DMK); 7 Jul, Coal City (Grundy Co) (JHH). MC: 20, McGinnisSl, 1 Aug (SBB). LD: 17 Oct, I&M Canal (LaSalle Co) (BC); 10 Oct, LCal (WJM).

Greater Yellowlegs

EA: 22 Jun, SantaFe (DMK); 4 Jul, Sangamon (HDB). MC: 50+, BigL (Brown Co), 16 Aug (KAM); 50, LShel, 18 Sep (CAT, TAM, TLK); 38, KLMSNA, 24 Aug (C&PD). LD: 12 Nov (3), HennepinL (MJW); 4 Nov, Montrose (CBT).

Willet

EA: 19 Jun, Sangamon (HDB); 10 Jul, see below; 15 Jul, KLMSNA (DMK); 15 Jul, DeKalb sod farm (DTW). MC: 15, La SalleL (LaSalle Co), 10 Jul (DL, SDB, DRD); 8, s. Chi lakefront, 17 Aug (DFS); 7, Montrose, 16-17 Aug (MI, JHP); 5, KLMSNA, 25 Sep (C&PD).

Lesser Yellowlegs

EA: 29 Jun, *Wabash* (CLH); 3 Jul, *Bolingbrook* (Will Co) (UWG). MC: 500+, *BigL* (Brown Co), 16 Aug (KAM); 150, *TwoRivers*, 25 Jul (DMK, MSS).



Whimbrel. Carlyle Lake, Clinton County. 13 September 2009.

Photo by Travis A. Mahan

Upland Sandpiper

EA: 24 Jul, *LDDP* (TAM); 31 Jul, *Momence sod farm* (Kankakee Co) (JHH). MC: 4, *SantaFe*, 5 Aug (DMK, MSS). LD: 26 Aug, *Midewin* (DFS).

Whimbrel

EA: 16 Aug, *Montrose* (MMC); 27 Aug, *LaSalleL* (JAS); 28 Aug, *Grant Pk* (Chi) (DEW); 29 Aug, *Wauk* (EWW). LD: 11-26 Sep, *CarlL-C* (CA, DMK, MSS, KAM, JRRS:ph, JAS et al.).

Hudsonian Godwit

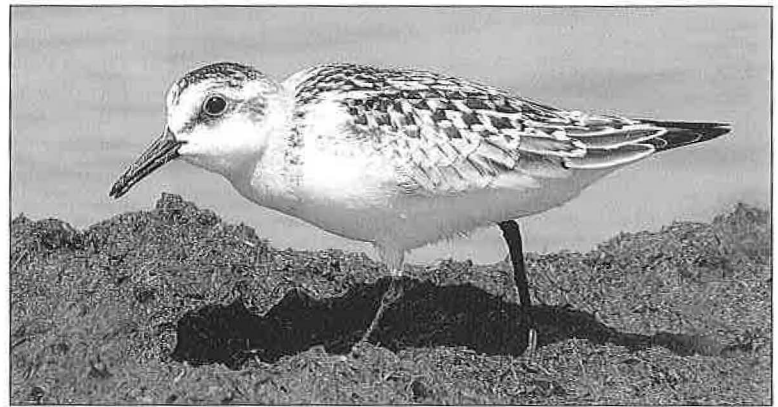
EA: 14 Jul, *DeKalb* (RM); 30 Aug, 6 Sep (3), *RendL* (TJD, LS, DMn, PT). MC: 4, *L Shel*, 19-20 Sep (JRRS, GN, KKM). LD: 10 Oct, *CarlL-C* (DMK, MSS).



Whimbrel. Carlyle Lake, Clinton County. September 2009. Photo by Dan Kassebaum.



Sanderling. Montrose, Cook County, 17 August 2009. Photo by Jerry Goldner.



Sanderling. Montrose, Cook County. 13 October 2009. Photo by Steve Spitzer.

Marbled Godwit

EA: 26 Jul, *Emiquon* (KBR, MJB); 17-18 Aug, *CarlL-C* (DMK, MSS); 30 Aug, *Wauk* (AFS, RE). MC: 3, *ClearL* (Mason Co), 21 Aug (RGB, SNB).

Ruddy Turnstone

EA: 30 Jul, *SantaFe* (DMK). MC: 10, *Montrose*, 17 Aug (ABB); 9, s *Chi lakefront*, 17 Aug (DFS); 3, *BigL* (Brown Co), 16 Aug (KAM). LD: 20 Nov, *Rainbow Beach* (Chi) (GN, JRRS).

Red Knot

EA: 28 Jul, *Sangamon* (HD13); 16 Aug, *Beardstown* (Cass Co) (EWW, WSS); 26 Aug, *CarlL-C* (DMK, MSS, KAM). MC: 2, *Montrose*, 17 Aug (DBJ, APS). LD: 18-21 Sep, *CarlL-F* (MJB, MSS, KAM, IOS, m. ob.). Others: *LShel*, 27 Aug (TAM); *LaSalleL*, 28 Aug- 3 Sep (APS, MJB, JDM, CKM); *WinthropL*, 30 Aug (EWW).

Sanderling

EA: 30 Jul, *CarlL-C* (DMK, MSS); 10 Aug, *LShel* (Shelby Co) (TAM); 15 Aug, *Columbia* (Monroe Co) (EWW, WSS). MC: 42, *Montrose*, 23 Sep (JRRS). LD: 23 Nov (2), *Wauk* (MJB, MJW); 21 Nov (2), *IBSP* (EWW).



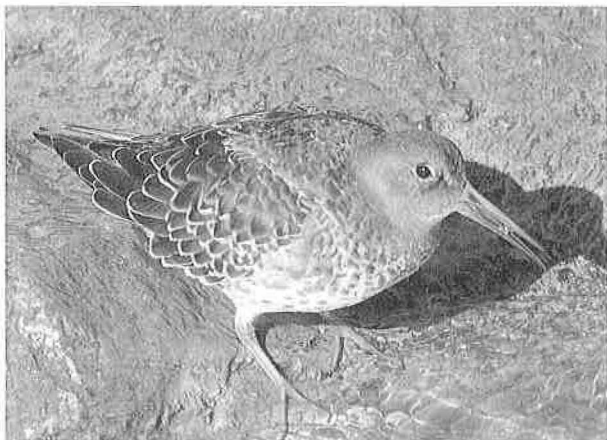
Ruddy Turnstone. Montrose, Cook County. 15 October 2009. Photo by Steve Spitzer.



*Dunlin. Montrose, Cook County.
23 October 2009. Photo by Steve Spitzer.*



*Least Sandpiper. Montrose Beach, Cook County.
22 August 2009. Photo by Craig Thayer.*



*Purple Sandpiper. Waukegan, Lake County.
17 October 2009. Photo by Nolan Lameka.*



*Dunlin and Sanderling. Montrose, Cook County.
13 October 2009. Photo by Steve Spitzer.*

Semipalmated Sandpiper

EA: 11 Jul (ad), *Sangamon* (HDB); 14 Jul, Wabash Bottoms (Wabash Co) (DMK, MSS, CLH); 25 Jul (6), TwoRivers (DMK, MSS). **MC:** 118, ClearL (Mason Co), 21 Aug (RGB, SNB); 80, CarlL-C, 6 Sep (DMK, MSS).

Western Sandpiper

EA: 8 Aug, BigL (Brown Co) (DMK, KAM, MSS); 9 Aug, CarlL-C (DMK, MSS). **MC:** 10, CarlL-C, 29 Aug (DMK, MSS). **LD:** 3 Oct, LShel (TAM, MSS, KAM, CAT et al.); 19 Sep, CarlL-F (IOS).

Least Sandpiper

EA: 17 Jun, *Sangamon*, (HDB); 28 Jun, LCal (WJM); 3 Jul, Bolingbrook (Will Co) (UWG); 6 Jul, *Wabash* (CLH). **MC:** 800, TwoRivers, 25 Jul (DMK, MSS, KAM). **LD:** 30 Nov (3), *Sangamon* (HDB); 27 Nov (5), HennepinL (DFS).

White-rumped Sandpiper

MC:3, El Paso Sewage Ponds (Woodford Co), 28 Aug (TH). **LD:**25 Sep, LShel (MJF).

Baird's Sandpiper

EA: 30 Jul, SantaFe (KAM); 14 Aug, Wauk (EWW). **MC:** 6, CarlL-C, 30 Aug (DMK, MSS). **LD:** 12 Nov, HennepinL (MJW).

Pectoral Sandpiper

EA: 11 Jul (2), ConnerL (DMK, MSS); 14 Jul (5), *Sangamon* (HDB); 14 Jul (6), *Wabash* (CLH, DMK, MSS). **MC:** 6000, TwoRivers, 29 Jul (KAM); 3500+, BigL (Brown Co) 16 Aug (KAM). **LD:** 21 Nov, HennepinL (MJB).

PURPLE SANDPIPER

Wauk, 17 Oct (AFS, PAM, NAL:ph, JRRS:ph).

Dunlin

EA: 20 Jul, *Kankakee* (JHH); 21 Sep, Montrose (RDH); 3 Oct, LShel (TAM et al.). **MC:** 500, HennepinL, 30 Oct (KAM); 100, I&M Canal (LaSalle Co), 31 Oct (BC); 83, *Woodford*, 31 Oct (PF, MB); 40, CarlL-C, 31 Oct (DMK, MSS); 40, Montrose, 23 Oct (SSp). **LD:** 28 Nov, *Kankakee* (JHH); 27 Nov (2), HennepinL (DFS).

Stilt Sandpiper

EA: 11 Jul, ConnorL (DMK, MSS); 14 Jul (ad), *Sangamon* (HDB); 14 Jul, *Wabash* (CLH, DMK, MSS); 16 Jul, *Kankakee* (JHH). **MC:** 100+, BigL (Brown Co), 16 Aug (KAM); 80, CarlL-C, 5 Sep (DMK, MSS); 75, LShel, 22 Sep (TAM). **LD:** 17 Oct (8), LShel (TAM); 11 Oct, CarlL-C (DMK, MSS).

Buff-breasted Sandpiper

EA: 9 Aug, BigL (Brown Co) (KBR, MJB et al.); 10 Aug, Momence sod farms (Kankakee Co) (JHH). MC: 9, BigL (Brown Co), 8 Aug (KAM); 6, Kendall, 6 Sep (JRRS). LD: 7 Sep (2), Boone (DFS).

RUFF

LShel, 21-22 Sep (TDF, RDF:ph, EWW).

Short-billed Dowitcher

EA: 9 Jul (2 ads), Sangamon (HDB); 9 Jul (5), LaSalleL (DMK, MSS, KAM); 12 Jul, Wabash (CLH); 15 Jul, KLMSNA (JMe, CM). MC: 30, Chau, 25 Sep (RGB, SNB).

Long-billed Dowitcher

MC: 31, Chau, 10 Oct (RGB, SNB); 26, LDDP, 20 Oct (TAM); 20, HennepinL, 30 Oct (KAM); 13, CarlL-C, 10 Oct (DMK, MSS).

Wilson's Snipe

EA: 4 Jul, Maz/Braid (DFS). MC: 41, Kankakee, 27 Nov (JHH).



Buff-breasted Sandpiper. St. Charles, Kane County. 16 September 2009.

Photo by Mark Bowman

American Woodcock

EA: 14 Aug (spec. to FMNH), Chi (Loop) (CBCM); 5 Oct (2), Columbus Pk (Chi) (EDG). MC: 9, Chi (Loop), 1 Nov (specs. to FMNH)(CBCM); 5, Kankakee, 29 Oct (JHH); 2, Montrose, 31 Oct (MMC). LD: 30 Nov, Crawford (APS, MJB).

Wilson's Phalarope

EA: 12 Jul, nw. Kane (DTW). MC:5, CarlL-C, 29 Aug (DMK, MSS).

Red-necked Phalarope

EA: 29 Aug (2), CarlL-C (DMK, MSS, TAM). MC: 4, off Montrose, 5 Sep (JRRS). LD: 15-7 Oct, El Paso Sewage Ponds (Woodford Co) (MJW, TH).

Red Phalarope

EA: 6 Aug, Douglas-Hart NC (Coles Co) (DMo, RDF:ph, TAM, SDB); 13-19 Sep, CarlL-C (DMK, MSS, IOS). LD: 31 Oct, CarlL-C (DMK).



Red Phalarope. Douglas Hart Nature Center, Coles County. 6 August 2009. Photo by Richard Funk.

Red Phalarope. Carlyle Lake, Clinton County. 19 September 2009. Photo by Greg Neise.

Red-necked Phalarope. Carlye Lake, Clinton County. 19 September 2009. Photo by Greg Neise.



Ring-billed Gull

MC: 4000, CarlL-C, 8-15 and 26-29 Nov (DMK, MSS); 3150, WinthropH, 6 Aug (EWW).

CALIFORNIA GULL

LShel, 27 Aug-22 Sep (TAM, m. ob.); WinthropH (ad), 28 Oct-2 Nov (TBL:ph, JRRS); WinthropH (ad), 17 Nov (EWW:ph).

Herring Gull

MC: 5600, WinthropH, 14 Nov (GAW).

Thayer's Gull

EA: 16 Oct (4), WinthropH (PKD). MC: 5, WinthropH, 17 Oct (GN, JRRS, KKM).

Iceland Gull

EA: 24 Oct, WinthropH (PKD, GN, JRRS).

Lesser Black-backed Gull

EA: 11 Sep, Wauk (JRRS); 13 Sep, Dresden L&D (Grundy Co) (FM, m. ob.); 19 Sep, LShel (DTW, BCW, LGB). MC: At least 12 (1 1st, 1 2nd, 3 3rd, 7 ad.) different birds present along L Michigan lakeshore late October to mid-November (m. ob.); 8, WinthropH, 14 Nov (GAW).

GLAUCOUS-WINGED GULL

WinthropH (ad), 17 Oct (GN ph, KAM, m. ob.).

Glaucous Gull

EA: 19 Nov, Lake Villa (Lake Co) (RB); 21-23 Nov, WinthropH (DBJ, MJW, MJB, et al.).

Great Black-backed Gull

EA: 13 Nov, WinthropH (GN, JRRS, KKM, TBL).

Black-legged Kittiwake

EA: 11-12 Sep, Dresden L&D (Grundy Co)(JRG, BA:ph, m. ob.). LD: 29 Nov - 6 Dec, ClintonL (MJF, MML, TAM).

Thayer's Gull.

North Point Marina,

Lake County. 13 November 2009.

Photo by Greg Neise.



Volume 19, Number 2



California Gull. Lake Shelbyville, Moultrie County.

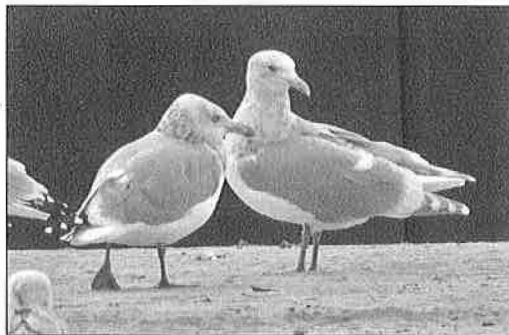
15 September 2009.

Photo by Tyler Funk.



Lesser Black-backed Gull. North Point Marina, Lake County. 13 November 2009.

Photo by Greg Neise.



Glaucous-winged Gull, right. North Point Marina, Lake County. 17 October 2009.

Photo by Greg Neise.

Sabine's Gull

EA: 8 Sep, CarlL-C (DMK, MSS); 13 Sep, Dresden L&D (Grundy Co) (MAM, m. ob.). MC: 3, CarlL-C, 4 Oct (DMK, MSS, CLH). LD: 4 Oct (3), CarlL-C (DMK, MSS, CLH); 29 Sep, ClintonL (MJF).

Bonaparte's Gull

EA: 29 Jul, Sangamon (HDB). MC: 6000, CarlL-C, 26-29 Nov (DMK, MSS).

LITTLE GULL

CarlL-C, 31 Oct & 21 Nov (DMK:ph, MSS).

Laughing Gull

EA: 4 Aug, WinthropH (EWW). MC: 2, RendL, 10 Jul (LS). LD: 28-31 Oct, CarlL-C (WMR, DMK); 25 Oct, HL (WMR, FLH); 17 Aug-23 Sep (1st), LShel (TAM, MJB, m. ob.). Others: At least 3 individuals present during period at CarlL-C (1 1st, 1 2nd, 1 ad) (DMK et al.).

Franklin's Gull

EA: 25 Jul, Sangamon (HDB). MC: 130, HL, 1 Nov (FRH); 40, CarlL-C, 8 Nov (DMK, JRRS, KAM); 32, RendL

(Franklin/Jefferson Cos), 31 Oct (LS, DMn); 29, EForkL, 31 Oct (CLH). LD: 25 Nov (2), L Decatur (Macon Co) (TAM).

Least Tern

MC: 4, Grayville sewage plant (White Co), 21 Aug (CLH). LD: 29 Aug (3); *White* (RES). Others: TwoRivers, 16 Aug (EWW); StarvedRock, 24 Aug, (MJB).

Caspian Tern

EA: 3 Jul (2), Sangamon (HDB). MC: 80, CarlL-C, 6 Sep (DMK, MSS); 56, WorleyL (Tazewell Co), 12 Aug (DH); 37, Channanon (Will Co), 18 Aug (DFS); 35, Evanston (Cook Co), 19 Aug (JT). LD: 2 Oct, Montrose (LGM).

Black Tern

EA: 1 Jul (5), Sangamon (HDB); 1 Aug (2), NelsonL (Kane Co) (TBr). MC: 85, TwoRivers, 20 Aug (MJW); 60, CarlL-C, 4 Aug (DMK); 48, LaSalleL, 17 Aug (JDM, CKM). LD: 23 Sep, RendL (LS).

Common Tern

EA: 6 Jul (6), Sangamon (HDB); 9 Jul, LaSalleL (DMK, MSS, KAM); 7 Aug (13), WinthropH



Black-billed Cuckoo. Palos Preserves, Cook County. 4 September 2009. Photo by Brian Tang.

(EWW). **MC:** 130, CarlL-C, 13 Sep (DMK, MSS). **LD:** 31 Oct (6), CarlL-C (DMK).

Forster's Tern

EA: 22 Jul, Sangamon (HDB). **MC:** 92, RendL 23 Sep (LS); 40, CarlL-C, 31 Oct (DMK). **LD:** 29 Nov (2), CarlL-C, (DMK, MSS).

PARASITIC JAEGER

Wauk (juv), 20 Sep (MJH).

LONG-TAILED JAEGER

CarlL-C, 3 Oct (light juv) (DMK, KAM).

Rock Pigeon

MC: 685, s. Cook, 25 Nov (DFS); 600, CarlL-C, 8 Nov (DMK, MSS); 175, Kankakee, 17 Sep (JHH).

Eurasian Collared-Dove

MC: 48, Arcola (Douglas Co), 29 Nov (JAS); 41, w. of Gladstone (Henderson Co), 14 Nov (CAT, TLK); 20, CarlL-C, 29 Nov (DMK, MSS).

Mourning Dove

MC: 315, Kane, 8 Aug (DFS); 240, Momence sod farms (Kankakee Co), 29 Aug (GAW, COS); 200, CarlL-C, 30 Aug (DMK, MSS).

Monk Parakeet

MC: 36, Burnham (Chi), 28 Nov (WJM); 22, Jesse Owen Pk (Chi), 19 Aug (CAT). **Others:** Peacock M (Will Co), 21 Aug (ABe).

Black-billed Cuckoo

EA: 21 Jul, Montrose (KH). **MC:** 2, Montrose, 10 Aug (JE, GAW). **LD:** 19 Sep, MArb (DS); 12 Sep, StarvedRock (BC).

Yellow-billed Cuckoo

MC: 7, Putnam, 18 Aug (DFS); 4, CarlL-C, 1 Aug (DMK). **LD:** 11 Oct, I&M Canal (Grundy Co) (JDM, CKM).

Barn Owl

CarlL-C, 30 Aug (DMK, MSS); Wauk, 1 Nov (EWW).

Eastern Screech-Owl

MC: 6, CarlL-C, 15 Aug (DMK); 6, PRSNA, 25 Nov (CLH, RES); 4, Greene, 7 Sep (CAT, TLK).

Great Horned Owl

MC: 4, MidSav, 19 Sep (ABt).

Barred Owl

MC: 5, Warren, 5 Sep (CAT, TLK).

Long-eared Owl

EA: 9 Nov, Mackinaw Bluffs (Woodford Co)(MJW); 21 Nov, Kankakee (JHH); 27 Nov, CarlL-F (DMK).

Short-eared Owl

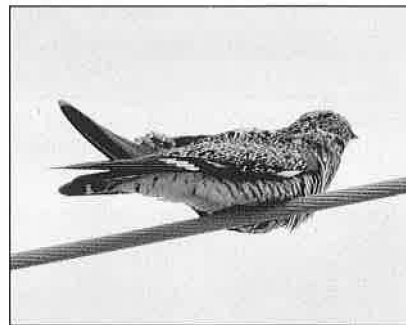
EA: 30 Aug, Lyons Wds FP (Lake Co) (EWW); 17 Oct, IBSP (AFS, JRRS, PKD, m.ob.); 20 Oct, Montrose (RDH). **MC:** 6, Nygren Wetland (Winnebago Co), 27 Nov (LGJ); 6, GLPSP, 29 Nov (JAS).

Northern Saw-whet Owl

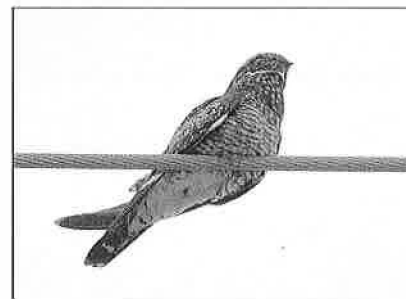
None reported.

Common Nighthawk

MC: 250, Wasco (Kane Co), 6 Sep (JAS); 150, Quincy (Adams Co), 26 Aug (AGD); 130, HL, 5 Sep (FRH). **LD:** 21 Oct, HL (FRH); 21 Oct (10), Kankakee (JHH); 20 Oct, GreeneVal (JAS); 19 Oct, Fairview Heights (St. Clair Co) (TJD).



Common Nighthawk. Race and Windsor Streets, Urbana, Champaign County. 26 August 2009. Photos by Ivan Petrov.



Chimney Swift

MC: 3340, Evanston (Cook Co), 20 Oct (FM); 1000, Rckfd, 1 Oct (DTW); 500, CarlL-C, 4 Sep (DMK, MSS). **LD:** 2 Nov, GreeneVal (REF, KDF); 1 Nov, Miller Meadow FP (Cook Co) (JSA); 30 Oct, EForkL (CLH); 30 Oct, HL (FRH); 28 Oct (3), O'Fallon (St. Clair Co) (KAM); 27 Oct, Sangamon (HDB).

GREEN VIOLETEAR

Mascoutah (St. Clair Co), 10 Aug (Rick and Linda Scheibel:ph). 1st state record.

Ruby-throated Hummingbird

MC: 83 (banded), Calhoun (JS); 14, HennepinL, 7 Sep (TH, DH); 12, CarlL-C, 15 Aug (DMK). **LD:** 12 Oct-3 Nov, Ottawa (LaSalle Co) (JDM, CKM); 17 Oct, Kankakee (JHH).

Belted Kingfisher

EA: 19 Aug, Chi (Loop) (spec. to FMNH) (CBCM). **MC:** 5, BannerM, 22 Aug (TH, DH).

Red-headed Woodpecker

MC: 24, Ft. Sheridan FP (Lake Co), 4 Oct (ABt); 20, Cranberry Sl (Cook Co), 21 Nov (KKM); 11, Greene, 7 Sep (CAT, TLK).

Red-bellied Woodpecker

EA: 19 Sep, Montrose (FM). **MC:** 18, HennepinL, 27 Nov (DFS); 17, CarlL, 1 Oct (KAM); 12, Kenyon NP (Woodford Co), 5 Sep (MJW); 12, Salt Creek Wds NP (Cook Co), 20 Sep (DFS); 12, MArb, 18 Oct (JHH); 12, Mackinaw Bluffs (Woodford Co), 31 Oct (MJW). **LD:** 3 Nov, Chi (Loop) (spec. to FMNH) (CBCM); 1 Nov, NoP (GAW).

Yellow-bellied Sapsucker

EA: 14 Sep, Chi (Loop) (spec. to FMNH)(CBCM); 14 Sep, Montrose (GAW); 14 Sep, StarvedRock (MJB); 15 Sep, Kankakee (JHH); 27 Sep, CarlL-C (DMK). **MC:** 18, NoP, 30 Sep (GAW); 8, CarlL-C, 10 Oct (DMK, MSS).

Downy Woodpecker

MC: 28, LowdMil, 4 Aug (DFS); 18, Salt Creek Wds NP (Cook Co), 18 Aug (DFS); 15, ne. Warren, 9 Nov (JR); 14, Kenyon NP (Woodford Co), 5 Sep (MJW); 10, CarlL-C, 10 Oct (DMK, MSS).

Hairy Woodpecker

MC: 11, LowdMil, 4 Aug (DFS); 7, Salt Creek Wds NP (Cook Co), 15 Nov (DFS); 6, CarlL-C, 10 Oct (DMK, MSS); 4, ClintonL, 8 Nov (MEF).

Northern Flicker

MC: 45, Mackinaw Bluffs (Woodford Co), 30 Sep (MJW); 30, CarlL-C, 10 Oct (DMK, MSS).

Pileated Woodpecker

MC: 3, Quincy (Adams Co), 11 Sep (AGD).

Olive-sided Flycatcher

EA: 21 Jul, Kankakee (JHH); 2 Aug, Woodford (TH); 5 Aug, MArb (DS); 16 Aug, Jarvis (LGM). MC: 2; Kankakee, 23 Aug (JHH); 2, Humboldt Pk (Chi), 27 Aug (SBB). LD: 11 Oct, Sangamon (HDB); 27 Sep, Montrose (JRRS).

Eastern Wood-Pewee

MC: 28, LowdMil, 4 Aug (DFS); 20, CarlL-C, 7 Sep (DMK, MSS). LD: 31 Oct, Jarvis (CLW); 30 Oct, CarlL-C (DMK); 28 Oct, Clay (CLH); 25 Oct, BuseyWds (GSL); 23 Oct, Sangamon (HDB).

Yellow-bellied Flycatcher

EA: 5 Aug, Montrose (MMC); 29 Aug, MeadbrkPk (MML); 29 Aug, CarlL-C (DMK, MSS). MC: 5, Montrose, 28 Aug (GAW); 2, MeadbrkPk, 29 Aug (MML); 2, CarlL-C, 30 Aug (DMK, MSS). LD: 3 Oct, Bloomington (McLean Co) (MLR, MH); 1 Oct, Knox (DJM); 29 Sep, Calumet Pk, Chi (WJM); 26 Sep, CarlL-C (DMK, MSS).

Acadian Flycatcher

MC: 4, LowdMil, 4 Aug (DFS). LD: 16 Sep, St. Clair (GH); 13 Sep, Sangamon (HDB).

Alder Flycatcher

EA: 6 Aug, PaulDoug (SWS). MC/LD: 25 Sep (2), CarlL-C (DMK).

Willow Flycatcher

MC: 10, East Branch FP (Dupage Co.), 1 Aug (ABA). LD: 22 Sep, JP (RLS); 7 Sep, CarlL-C (DMK, MSS).

Alder/Willow Flycatcher

MC: 5, JP, 1 Sep (SFa). LD: 27 Sep, Northerly I (Chi) (WSG, FM, DP, BJS).

Least Flycatcher

EA: 20 Jul, Grant Pk (Chi) (DFS); 21 Jul (2), Sangamon (HDB); 26 Jul, Montrose (MMC); 15 Aug, CarlL-C (DMK). MC: 6, Montrose,



Olive-sided Flycatcher. Montrose, Cook County. 5 September 2009. Photo by Wes Serafin.

12 Sep (GAW, IAS). LD: 13 Oct, Montrose (KH); 10 Oct, Zion (Lake Co) (EWW).

Eastern Phoebe

EA: 20 Jul, Montrose (RDH). MC: 16, CarlL-C, 7 Sep (DMK, MSS). LD: 15 Nov, EvergreenL (McLean Co) (DW); 12 Nov, Fullersberg Wds FP (Dupage Co) (CWz).

SAY'S PHOEBE

Sangamon, 1 Oct (HDB).

Great Crested Flycatcher

MC: 9, Woodford Co CA, 2 Aug (TH); 4, CarlL-C, 7 Sep (DMK, MSS); 4, MomenceWet, 15 Aug (DFS). LD: 6 Oct, McHenry (PCf); 23 Sep, Kankakee (JHH).

Western Kingbird

LD: 18 Aug, O'Fallon (St. Clair Co) (GH); 6 Aug, Joppa (Massac Co) (FKB).

Eastern Kingbird

MC: 40, CarlL-C., 7 Sep (DMK, MSS); 32, Knox, 29 Aug (CAT). LD: 30 Oct, Spring L (Tazewell Co) (KAM, MSS); 30 Sep, MArb (GD); 26 Sep (2), CarlL-C (DMK, MSS).

Scissor-tailed Flycatcher

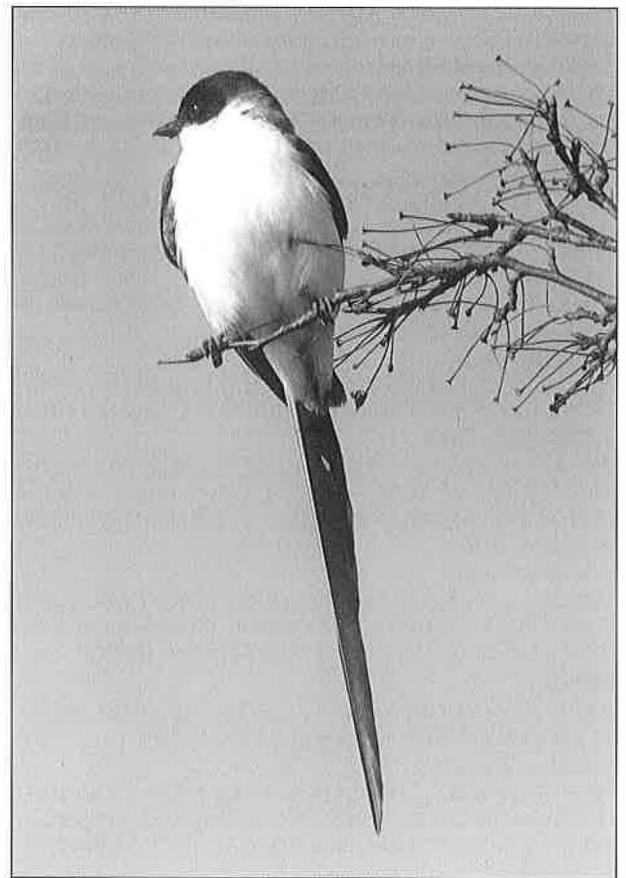
5 Nov, s. Jasper (CLH*, RES*).

FORK-TAILED FLYCATCHER

Gateway Pk (Rock Island Co), 20-25 Nov (Mabe Wassel, Kevin Wassel;ph, Madora Redman;ph).

Loggerhead Shrike

MC: 3, Jasper, 6 Nov (JAS); 2, Clinton, 6 Aug (DMK). Others: w. Winnebago, 2 Aug (DTW).



Fork-tailed Flycatcher. East Moline, Rock Island County. 20 November 2009. Photos by Malora Redman.





*Red-breasted Nuthatch. U of I Forestry,
Urbana, Champaign County. 30 August 2009.
Photo by Ivan Petrov.*

Northern Shrike

MC: 2, ISBP, 24 Oct (JRRS, GN, PKD). **Others:** Spring Bluff FP (Lake Co), 14 Nov into Dec (EWW, SDB, m.ob); GreenR, 7 Nov (EWW, WSS).

White-eyed Vireo

MC: 5, CarlL-C, 20 Sep (DMK, IOS). **LD:** 14 Nov, Sangamon (HDB).

Bell's Vireo

MC: 2, BannerM, 30 Aug (MML); 2, St. Clair, 2 Sep (GH); 2, CarlL-C, 9, 22 Aug (DMK). **LD:** 6 Sep, CarlL-F (KAM); 4 Sep, GreenR (DTW).

Yellow-throated Vireo

MC: 6, CarlL-C, 14 Sep (KAM); 4, Bliss Wds FP (Kane Co), 11 Sep (DFS). **LD:** 7 Oct, Sangamon (HDB); 4 Oct, Mackinaw Bluffs (Woodford Co.) (MJW); 4 Oct, CarlL-C (DMK); 29 Sep, JP (RLS).

Blue-headed Vireo

EA: 14 Sep, Wadsworth Wetlands (Lake Co) (REP). **MC:** 3, Brookfield Wds FP (Cook Co), 21 Sep (DFS); 3, Miller Meadows FP (Cook Co) (GN, JRRS); 3, Kenyon NP (Woodford Co), 3 Oct (MJW); 3, CarlL-C, 18 Oct (DMK, MSS). **LD:** 8 Nov, CarlL-C (DMK, MSS); 31 Oct, EvergreenL (McLean Co) (TH, DH); 27 Oct, Sangamon (HDB).

Warbling Vireo

MC: 10, CarlL-C, 7 Sep (DMK, MSS); 7, LCal (Wolf L), 1 Sep (WJM). **LD:** 15 Nov, Sangamon (HDB); 10 Oct, Kankakee (JHH).

Philadelphia Vireo

EA: 24 Aug, Kankakee (JHH); 30 Aug, Woodford Co CA (TH). **MC:** 6, PaulDoug, 24 Sep (SWS); 4, LShel, 19 Sep (MJB); 4, CarlL-C, 27 Sep (DMK, MSS). **LD:** 19 Oct, Bond (MSS); 16 Oct, Sangamon (HDB).

Red-eyed Vireo

MC: 16, Lib CA (Boone Co), 7 Sep (DFS); 14, Salt Creek Wds NP (Cook Co), 23 Aug (DFS); 15, EvergreenL (Woodford Co), 7 Sep (MJW). **LD:** 28 Oct, JP (PRC); 17 Oct, Sangamon (HDB).

Blue Jay

EA: 29 Aug (7); Zion (Lake Co) (EWW). **MC:** 300, CarlL-C, 18 Oct (DMK, MSS); 75+, LShel, 17 Oct (TAM).

American Crow

MC: 150, CarlL-C, 12 Oct (DMK); 134, Kankakee, 12 Oct (JHH); 121, HennepinL, 13 Nov (DFS); 100, Moraine View SP (McLean Co), 1 Sep (EW); 77, Hancock, 5 Sep (CAT, TLK); 59, Montrose, 12 Oct (FM).

Fish Crow

MC: 25, RendL (Ward Branch), 11 Sep (TJD); 3, L&D 21, Quincy (Adams Co), 27 Aug (AGD). **LD:** 14 Sep, RendL (MSS).

Horned Lark

MC: 500, St. Clair, 6 Sep (TJD); 200, CarlL-C, 26 Nov (DMK).

Purple Martin

MC: 300, Midewin, 15 Sep (MM). **LD:** 21 Oct, Montrose (FM); 12 Oct, PaulDoug (SWS).

Tree Swallow

MC: 100,000, CarlL-C, 3, 4, & 12 Oct (DMK, KAM, MSS); 10000+, Hancock, 5 Sep (CAT, TLK). **LD:** 27 Nov, El Paso Sewage Ponds (Woodford Co) (MLR); 13 Nov, Sangamon (HDB).

Northern Rough-winged Swallow

MC: 1192, Kankakee, 27 Aug (JHH); 700+, BigL (Brown Co), 8 Aug (KAM). **LD:** 18 Nov (2), Kankakee (JHH); 26 Oct, LCal (WJM); 25 Oct (9), New Athens (St. Clair Co) (TJD).

Bank Swallow

MC: 2000, BigL (Brown Co), 16 Aug (KAM); 885, Erie (Whiteside Co), 18 Jul (DFS). **LD:** 12 Oct, CarlL-C (DMK); 29 Sep (3), Kankakee (JHH); 27 Sep (4), Plainfield (Will Co) (ABe).

Cliff Swallow

MC: 400, CarlL-C, 20 Sep (DMK, IOS); 250, GreenR, 4 Sep (DTW). **LD:** 16 Oct (10), El Paso Sewage Ponds (Woodford Co) (TH); 11 Oct, CarlL-C (DMK, MSS).

Barn Swallow

MC: 600, CarlL-C, 20 Sep (DMK, IOS); 400, Emiquon, 6 Aug (JRRS, GN). **LD:** 6 Nov, IBSP (JRRS).

Carolina Chickadee

MC: 20, CarlL-C, 7,8, & 27 Sep (DMK, MSS).

Black-capped Chickadee

MC: 74, Poplar Creek FP (Cook Co) (ABA); 58, LowdMil, 4 Aug (DFS); 58, Ryerson CA (Lake Co), 19 Sep (AB); 56, Salt Creek Wds FP (Cook Co), 23 Aug (DFS); 42, Klehm Arb (Winnebago Co), 20 Nov (EES).

Tufted Titmouse

MC: 30, CarlL-C, 1 Aug (DMK, MSS); 12, Marshall, 13 Nov (DFS); 12, Mackinaw Bluffs (Woodford Co), 11 Sep (MJW).

Red-breasted Nuthatch

EA: 12 Aug, NoP (GAW); 2 Sep, Grant Pk (Chi) (DFS); 3 Sep, Bloomington (Ewing Pk, McLean Co) (MHB). **MC:** 24-30, IBSP, 3-21 Nov (EWW, DRD, m. ob.); 25, IBSP, 17 Oct (JRRS, GN, KKM); 12, Fermi, 24 Nov (SfD).

White-breasted Nuthatch

MC: 26, Ogle, 4 Aug (DFS); 25, Mackinaw Bluffs (Woodford Co), 11 Sep (MJW); 23, HennepinL, 27 Nov (DFS).

Brown Creeper

EA: 2 Sep, Ryerson CA (Lake Co) (ABt); 18 Sep, Grant Pk (Chi) (DFS); 20 Sep, AllertonPk (EW). **MC:** 10, Montrose, 4 Oct (GAW); 10, Calumet Pk (Chi), 10 Oct (WJM).

Carolina Wren

MC: 9, Kankakee, 21 Nov (JHH).

BEWICK'S WREN

McDonough, 3 Sep (MJB*).

House Wren

MC: 24, LowdMil, 4 Aug (DFS); 18, Schuck's Grove (Woodford Co), 12 Aug (TH); 12, Kenyon NP (Woodford Co), 3 Oct (MJW). **LD:** 27 Nov, CarlL-C (DMK:ph); 24 Nov, Merwin NP (Woodford Co) (TH); 22 Nov, Lenzburg (St. Clair Co) (TJD); 14 Nov, Mercer (CAT); 31 Oct, Montrose (MMC).

Winter Wren

EA: 17 Sep, Ryerson CA (Lake Co) (DFS); 24 Sep, Montrose (GAW). **MC:** 9, Grant Pk (Chi), 17 Oct (DEW); 9, Montrose, 17 Oct (GAW).

Sedge Wren

MC: 16, CarlL-C, 1 Aug (DMK, MSS); 16, HennepinL, 18 Aug (DFS); 5, Whalon L FP (DuPage Co), 1 Oct (ABe); 4, Montrose, 24 Sep (GAW). LD: 31 Oct, Mackinaw Bluffs (Woodford Co) (MJW); 27 Oct, Evanston (Cook Co) (JT).

Marsh Wren

LD: 22 Nov (3), Lenzburg (St. Clair Co) (TJD); 21 Nov, McGinnisSI (FM, RLS, JD); 14 Nov, IBSP (EWW).

Blue-gray Gnatcatcher

MC: 9, Salt Creek Wds NP (Cook Co), 30 Aug (DFS); 8, Woodford Co CA, 30 Aug (TH); 6, CarlL-C, 15 Aug (DMK). LD: 11 Nov, Minonk (Woodford Co) (TH); 13 Oct, Crabtree NP (Cook Co) (BM).

Golden-crowned Kinglet

EA: 15 Sep, Ryerson CA (Lake Co) (ABT); 27 Sep, IBSP (JSS); 1 Oct, Kankakee (JHH). MC: 105, Lincoln Pk (Chi), 10 Oct (GD); 40, Grant Pk (Chi), 10 Oct (DEW); 35, PaulDoug, 24 Oct (ABA); 27, Calumet Pk (Chi), 10 Oct (WJM); 25, EvergreenL. (Woodford Co), 18 Oct (MJW).

Ruby-crowned Kinglet

EA: 1 Sep, Spoon L (Knox Co) (MJB); 2 Sep, Rock Island (SH); 18 Sep, Fayette (MSS). MC: 80, CarlL-C, 12 Oct (DMK); 60, Montrose, 10 Oct (GD); 30, Mackinaw Bluffs (Woodford Co), 4 Oct (MJW); 30, Humiston Wds (Livingston Co), 17 Oct (EW); 19, Reckfd, 24 Oct (DTW). LD: 24 Nov, Chi (LP).



Sprague's Pipit. Greene Valley Forest Preserve, DuPage County. 29 October 2009. Photo by Jeff Smith.

Eastern Bluebird

MC: 90, Woodford, 31 Oct (MJW); 48, MArb, 29 Aug (JoZ, JeZ); 35+, Palos, 25 Oct (WJM, COS).

Veery

EA: 27 Aug, Humboldt Pk (Chi) (SBB); 28 Aug, Lyons Wds FP (Lake Co) (EWW); 29 Aug, Sangamon (HDB). MC: 3, Kankakee, 13 Sep (JHH). LD: 10 Oct, Lyons Wds FP (Lake Co) (EWW).

Gray-cheeked Thrush

EA: 5 Sep, Champaign (GSL); 5 Sep, Minonk (Woodford Co) (TH). MC: 14, Montrose, 24 Sep (GAW). LD: 10 Oct, Montrose (FM); 3 Oct, LShel (TAM, et al.).

Swainson's Thrush

EA: 26 Jul, Montrose (RDH) and Jarvis (LGM). MC: 328 & 242 (night migrants), Kankakee, 18 & 8 Sep resp (JHH); 80, MeadbrkPk, 13 Sep (MML); 58, Westchester (Cook Co), 18 Sep (DFS). LD: 26 Oct, Evanston (Cook Co) (FM).



Sage Thrasher. Northerly Island, Cook County. 11 November 2009. Photo by Greg Neise.

Hermit Thrush

MC: 41, Lincoln Pk (Chi), 10 Oct (GAW); 18, Calumet Pk (Chi), 20 Oct (WJM).

Wood Thrush

MC: 3, Lib CA (Boone Co), 7 Sep (DFS). LD: 20 Oct, Burnham Pk (Chi) (JRRS, KKM); 5 Oct, Lyons Wds FP (Lake Co) (EWW); 4 Oct, Montrose (CLW); 30 Sep, Lib CA (Boone Co) (DTW).

American Robin

MC: 5000, HomerL, 15 Oct (SDB); 600, CarlL-C, 17 Oct (DMK, MSS); 500, Letcher Basin Preserve (Woodford Co), 27 Sep (MEF); 430, Volo Bog SNA (Lake Co), 4 Sep (BH); 375, Kankakee, 29 Oct (JHH); 320, PaulDoug, 24 Oct (ABA).

Gray Catbird

MC: 25, Lib CA (Boone Co), 7 Sep (DFS); 25, Kenyon NP (Woodford Co), 3 Oct (MJW). LD: into Dec, Grant Pk (Chi) (DFS); Sangamon (HDB); 27 Nov, HennepinL (DFS).

Northern Mockingbird

MC: 4, CarlL-C, 22 Aug (DMK, MSS). Others: Montrose, 2 Sep (ABB).

SAGE THRASHER

Northerly I (Chi), 10 Nov (KKM, JRRS:ph, GN:ph. m. ob.). 4th state record.

Brown Thrasher

MC: 4, Lib CA (Boone Co), 7 Sep (DFS); 4, Cuba Marsh FP (Lake Co), 10 Sep (MLM, LRy). LD: 8 Nov, MArb (JeZ).

European Starling

MC: 8000, CarlL-C, 15 Nov (DMK); 2234, Coles, 3 Oct (CAT); 2045, Will, 26 Aug (DFS); 1700, Momence sod farm (Kankakee Co), 13 Sep (JHH).

American Pipit

EA: 30 Aug, Montrose (RDC); 12 Sep (30), Funk's Grove (McLean Co) (MEF). MC: 105, LaSalle (JDM,CKM); 78, Momence sod farm (Kankakee Co), 24 Oct (JHH); 66, GreeneVal, 29 Oct (ABe). LD: widely seen into Dec.

SPRAGUE'S PIPIT

GreeneVal, 27-28 Oct (REF, JAS:ph); 24 Nov, PRSNA (RES*).

Cedar Waxwing

MC: 250+, O'Fallon (St. Clair Co), 21 Sep (KAM); 240, Kankakee, 2 Nov (JHH); 220, IBSP, 13 Aug (EWW).

Lapland Longspur

EA: 17 Sep, Burnham Pk (Chi) (BW); 19 Sep, Montrose (FM, LGM); 23 Sep (2), Wauk (EWW). MC: 1500, CarlL-C, 27 Nov (DMK); 500+, Vandalia (Fayette Co), 7 Nov (TAM).

Smith's Longspur

22 Sep, LShel (TAM*, KAM, MSS).

Snow Bunting

EA: 31 Oct, Montrose (MMC). **MC:** 30, Calumet Pk (Chi), 7 Nov (SBB).

Blue-winged Warbler

EA: 30 Aug, Ryerson CA (Lake Co) (RC). **MC:** 3, Salt Creek Wds FP (Cook Co), 30 Aug (DFS); 2, BuseyWds, 6 Sep (GSL). **LD:** 26 Sep, MArb (DS); 19 Sep, DuPage Wds FP (DuPage Co) (DBk, DBC); 19 Sep, *Woodford* (MJW).

"Brewster's" Warbler: *Sangamon*, 14, 17, & 25 Sep (HDB)-all different birds; *Woodford*, 9 Sep (MJW).

Golden-winged Warbler

EA: 12 Aug, Spoon L (Knox Co) (MJB); 19 Aug, *Sangamon* (HDB); 27 Aug, *Peoria* (PF). **MC:** 4, CarlL-C, 20 Sep (DMK, IOS); 4, Mackinaw Bluffs (Woodford Co), 11 Sep (MJW); 4, BuseyWds, 5-6 Sep (GSL). **LD:** 29 Sep, Montrose (SF); 27 Sep, *Monroe* (C&PD).

Tennessee Warbler

EA: 21 Jul, Powderhorn FP (Cook Co) (DFS); 24 Jul, Montrose (RDH). **MC:** 50, CarlL-C, 13 & 20 Sep (DMK, MSS, IOS). **LD:** 8 Nov, *Sangamon* (HDB); 29 Oct, *Kankakee* (JHH); 28 Oct, Miller Meadows FP (Cook Co) (GN); 27 Oct, Crawford Co CA (CLH).

Orange-crowned Warbler

EA: 15 Sep, Grant Pk (Chi) (DEW); 22 Sep, Montrose (GAW). **MC:** 15, Northerly I (Chi), 20 Oct (JRRS); 10, JP, 25 Oct (PRC). **LD:** 22 Nov, *Sangamon* (HDB); 15 Nov, *Richland* (CLH); 15 Nov, CarlL-C. (DKM, MSS); 6 Nov, Humboldt Pk (Chi) (SBB).

Nashville Warbler

EA: 23 Aug, Montrose (SF); 29 Aug, *Kankakee* (JHH). **MC:** 30, Kenyon NP (Woodford Co), 3 Oct (MJW); 16, Burnham Pk (Chi), 26 Sep (GAW). **LD:** 1 Nov, The Grove (Cook Co) (AR); 1 Nov, ClintonL (MEF); 31 Oct, Montrose (MMC); 30 Oct, *Sangamon* (HDB); 29 Oct, PRSNA (CLH).

Northern Parula

EA: 1 Sep, *Kankakee* (JHH). **LD:** 7 Nov, Fabyan FP (Kane Co) (DJS); 9 Oct, *Sangamon* (HDB).

Yellow Warbler

EA: 20 Jul, Grant Pk (Chi) (DFS); 29 Jul, *Sangamon* (HDB). **MC:** 10, LCal (Big Marsh), 2 Oct (SBB). **LD:** 8 Oct, Aroma Park (Kankakee Co.) (JHH).

Chestnut-sided Warbler

EA: 18 Aug, Montrose (GAW). **MC:** 30, CarlL-C, 20 Sep (DMK, IOS); 15, *Champaign*, 5 Sep (GSL); 13, Mackinaw Bluffs (Woodford Co), 4 Sep (MJW); 12, Funk's Grove (McLean Co), 12 Sep (MEF). **LD:** 19 Oct, Skokie Lagoons (Cook Co) (JRRS); 11 Oct, *Sangamon* (HDB); 10 Oct, StarvedRock (BC); 4 Oct, Salamander Springs (Kane Co) (RCR, NPB).

Magnolia Warbler

EA: 31 Jul, Rainbow Beach (Chi) (DFS); 6 Aug, Wildwood NC (Cook Co) (ABA). **MC:** 80, CarlL-C, 20 Sep (DMK, IOS); 29, Montrose, 27 Sep (GAW). **LD:** 27 Oct, Burnham Pk (Chi) (BW); 25 Oct, BuseyWds (GSL).

Cape May Warbler

EA: 23 Aug, Montrose (ABB); 23 Aug, Salt Creek Wds NP (Cook Co) (DFS). **MC:** 11, Grant Pk (Chi) 18 Sep (DFS). **LD:** 3 Nov, *Kankakee* (JHH); 29 Oct, Lincoln Pk (Chi) (LGM).

Black-throated Blue Warbler

EA: 25 Aug, West DuPage Wds FP (DuPage Co) (PAM);

Washington, 1 Sep (MSS). **MC:** 3, Bloomington (McLean Co), 3 Oct (MLR, MH). **LD:** 28 Oct (male), JP (PRC).

Yellow-rumped Warbler

EA: 1 Sep, JP (SF, BS); 1 Sep, Humboldt Pk (Chi) (SBB). **MC:** 200, CarlL-C, 10 Oct (DMK, MSS); 195, Miller Meadows FP (Cook Co), 28 Oct (GN); 125, IBSP, 16 Oct (JRRS); 108, Lincoln Pk (Chi), 10 Oct (GD); 78, *Kankakee*, 10 Oct (JHH); 75+, LShel, 17 Oct (TAM).

Black-throated Green Warbler

EA: 23 Aug, *Sangamon* (HDB); 23 Aug, *Kankakee* (JHH); 23 Aug, Salt Creek Wds NP (Cook Co) (DFS). **MC:** 40, CarlL-C, 20 Sep (DMK, IOS); 24, Bloomington (McLean Co), 24 Sep (MEF); 18, Mackinaw Bluffs (Woodford Co), 11 Sep (MJW). **LD:** 23 Oct, *Sangamon* (HDB); 17 Oct, BuseyWds (SDB, SLD).

Blackburnian Warbler

EA: 18 Aug, Montrose (GAW). **MC:** 6, *Champaign*, 5 Sep (GSL). **LD:** 7 Oct, *Sangamon* (HDB); 5 Oct, *Woodford* (MEF).

Yellow-throated Warbler

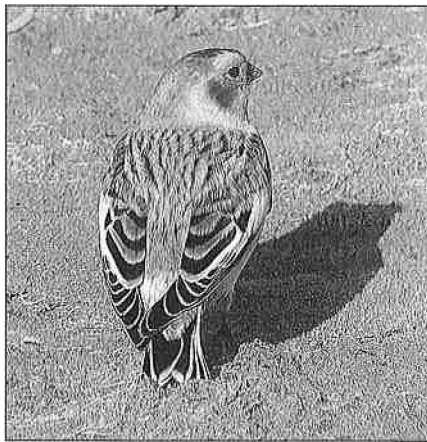
EA: 6 Sep, River Forest (Cook Co) (JSA). **MC:** 3, LowdMil, 4 Aug (DFS). **LD:** 16 Oct, Chau (TH); 7 Oct, *Sangamon* (HDB).

Pine Warbler

EA: 21 Aug, Genoa (DeKalb Co) (KML). **LD:** 3 Nov, IBSP (DRD).

Prairie Warbler

LD: 28 Jul, Montrose (RDH).



Snow Bunting. Montrose, Cook County. 24 October 2009. Photo by Steve Spitzer.

Palm Warbler

EA: 31 Aug, Grant Pk (Chi) (DFS); 9 Sep, NoP (GAW, NPBW); 15 Sep, *Kankakee* (JHH); 19 Sep, CarlL-C. (D&MAM). **MC:** 80, Grant Pk (Chi), 24 Sep (DFS); 70, Forest Park (Cook Co), 4 Oct (RAM, ALM); 64, Montrose, 10 Oct (GAW, CLW, GD). **LD:** 2 Dec, Braidwood (Will Co) (JHH); 30 Nov, Montrose (GAW); 18 Nov, *Kankakee* (JHH).

Bay-breasted Warbler

EA: 1 Sep (2), JP (SF, BS); 2 Sep, MeadbrkPk (MML). **MC:** 17, Bloomington (McLean Co), 24 Sep (MEF). **LD:** 3 Nov, IBSP (EWW:ph, m.ob.), 5 Oct, *Woodford* (MEF); 4 Oct, Rock Run Preserve (DuPage Co) (ABe).

Blackpoll Warbler

EA: 25 Aug, West DuPage Wds FP (DuPage Co) (PAM); 27 Aug (2), Humboldt Pk (Chi) (SBB); 4 Sep (4), *Kankakee* (JHH); 7 Sep, CarlL-C (DMK, MSS). **MC:** 26, Montrose, 14 Sep (GAW); 25, Grant Pk (Chi), 15 Sep (DFS). **LD:** 28 Oct (3), Miller Meadows FP (Cook Co) (GN); 4 Oct, JP (DFS, TP).

Cerulean Warbler

MC: 2, Loud Thunder FP (Rock Island Co), 27 Aug (MJB). **LD:** 7 Sep, EvergreenL (McLean/Woodford Cos) (MJW).

Black-and-white Warbler

EA: 1 Aug, CarlL-C (DMK, MSS); 19 Aug, Humboldt Pk (Chi) (SBB). **MC:** 50, *Montgomery, Fayette, Bond, Clinton and Marion*, 18 Sep (MJB); 20, Chiquipin Bluffs (Woodford Co), 11 Sep (MJW). **LD:** 12 Oct, Montrose (GAW).

American Redstart

EA: 4 Aug, Westchester (Cook Co) (DFS); 6 Aug, Wildwood NC (Cook Co) (ABA). **MC:** 250, CarlL-C, 20 Sep (DMK, IOS). **LD:** 7 Nov, *Champaign* (GSL:ph); 26 Oct (2), Lyons Wds FP (Lake Co) (EWW); 23 Oct, *Sangamon* (HDB); 20 Oct, Montrose (GAW).

Prothonotary Warbler

EA: 11 Aug, Montrose (RDH, m. ob.). **MC:** 4, TwoRivers, 16 Aug

(EWW, WSS). **LD:** 16 Sep, *Tazewell* (DH); 7 Sep (3), CarlL-C (DMK, MSS).

Worm-eating Warbler

LD: 19 Sep, *St. Clair* (GH).

Ovenbird

EA: 28 Jul, Montrose (GAW), 19 Aug, Humboldt Pk (Chi) (SBB). **MC:** 7, Beaubien Wds FP (Cook Co), 14 Sep (DFS); 6, BuseyWds, 27 Sep (GSL). **LD:** Into Jan, Chevalier Wds FP (Cook Co) (ABA:ph); 19 Nov, Chi (KKM).

Northern Waterthrush

EA: 28 Jul, Montrose (GAW); 1 Aug, MidSav (CEG). **MC:** 10, Columbus Pk (Chi), 8 Sep (EDG). **LD:** 25 Nov, Grant Pk (Chi) (DBJ).

Louisiana Waterthrush

LD: 2 Sep, Skokie River FP (Lake Co) (REP); 20 Aug, StarvedRock (DKA).

Kentucky Warbler

MC: 3, LowdMil, 2 Aug (DFS). **LD:** 16 Sep, *St. Clair* (GH); 7 Sep, Montrose (fide GAW).

Connecticut Warbler

EA: 30 Aug, Burnham Pk (Chi) (KT); 6 Sep, Montrose (DJS); 11 Sep, Mackinaw Bluffs (Woodford Co) (MJW). **MC:** 2, Montrose, 13 Sep (JRRS). **LD:** 11 Oct, Evanston (Cook Co) (MMC); 6 Oct, Aroma Park FP (Kankakee Co) (JBH).

Mourning Warbler

EA: 19 Aug, *Sangamon* (HDB); 23 Aug, Salt Creek Wds NP (Cook Co) (DFS). **MC:** 3, Grant Pk (Chi), 31 Aug & 2 Sep (DFS). **LD:** 4 Oct, *Sangamon* (HDB); 30 Sep, Rock Island (SH).

Common Yellowthroat

MC: 27, East Branch FP (DuPage Co), 1 Aug (ABA); 14, Montrose, 24 Sep (GAW). **LD:** 1 Dec, *Kankakee* (JBI); 27 Nov, HennepinL (DFS); 27 Nov, *Sangamon* (HDB).

Hooded Warbler

LD: 8 Sep, O'Fallon (St. Clair Co) (GH); 5 Sep, CapSauers (KMM).

Wilson's Warbler

EA: 28 Aug, Montrose (RDH); 29 Aug, MeadbrkPk (MML); 29 Aug, *Kankakee* (JHH); 2 Sep, *Madison* (MSS). **MC:** 7, Grant Pk (Chi), 2 Sep (DFS). **LD:** 7 Oct, *Sangamon* (HDB); 3 Oct, Chi (JRRS); 3 Oct, Bloomington (McLean Co) (MLR, MH).

Canada Warbler

EA: 21 Aug, *Sangamon* (HDB). **MC:** 2 reported from several sites from Chi south to *St. Clair* between 29 Aug and 12 Sep (m. ob.). **LD:** 30 Sep, *Rock Island* (SH); 27 Sep, CarlL-C (DMK, MSS); 16 Sep, Pioneer Pk (DuPage Co) (ABe).

Yellow-breasted Chat

LD: 16 Sep, *Sangamon* (HDB); 14 Sep, RendL (MSS).

Eastern Towhee

MC: 30, CarlL-C, 15 Aug (DMK). **LD:** 21 Nov, Grant Pk (Chi) (DEW).

American Tree Sparrow

EA: 24 Sep, Evanston (Cook Co) (JT). **MC:** 78, HennepinL, 27 Nov (DFS); 66, ClintonL, 23 Nov (MEF); 60, Northerly I (Chi), 10 Nov (KKM).

Chipping Sparrow

MC: 132, Maz/Braid, 13 Oct (JHH); 100+, Reckfld, 19 Oct (BCW); 58, Miller Meadows FP (Cook Co), 28 Oct (GN). **LD:** into Dec. in small numbers throughout.

Harris's Sparrow. Fermilab, DuPage County. 26 October 2010. Photo by Mark Bowman.



Harris's Sparrow. Concordia Cemetery, Cook County. 29 October 2009. Photo by Greg Neise.

Clay-colored Sparrow

EA: 15 Sep, Montrose (PKD). **MC:** 2, Montrose, 25 Sep (PKD); 2, Northerly I (Chi) 27 Sep (WSG, FM, BJS, DP), 29 Sep (JRRS); 2, Evanston (Cook Co), 7 Oct (MMC). **LD:** 31 Oct, Northerly I (Chi) (PKD); 18 Oct, Montrose (GAW); 12 Oct, Whalon L FP (DuPage Co) (JAS); 10 Oct, Zion (Lake Co) (EWW:ph).



Field Sparrow

MC: 65, Kenyon NP (Woodford Co.), 3 Oct (MJW); 40, EvergreenL (McLean Co.) (MJW); 21, LaSalleL, 13 Oct (JDM, CKM).

Vesper Sparrow

MC: 30, ClintonL, 9 Oct (MEF); 8, *Kane*, 8 Aug (DFS); 5, Northerly I (Chi) 27 Oct (KKM). **LD:** 27 Nov, *McLean* (MLR); 4 Nov, *Kankakee* (JH); 2 Nov, *Sangamon* (HDB).

Lark Sparrow

MC: 5, *Fulton*, 9 Aug (CAT, TLK). **LD:** 29 Oct, Montrose (ABB).

LARK BUNTING

Montrose (ad. ♂), 10 Aug (RDH, KH:ph, GAW:ph, m. ob.).

Savannah Sparrow

MC: 50, Montrose, 20 Oct (RDI); 40, Springbrook Pra FP (DuPage Co), 6 Oct (ABe). **LD:** widespread into Dec. (m. ob.).

Grasshopper Sparrow

MC: 2, HennepinL, 18 Aug (DFS). **LD:** 10 Dec, Montrose (SSp:ph); 28 Oct, JP (PRC); 27 Oct, Evanston (Cook Co) (MMC); 24 Oct, *Sangamon* (HDB).

Henslow's Sparrow

MC: 4, HennepinL, 18 Aug (DFS). **LD:** 29 Oct, PRSNA (CLH); 1 Oct, MidSav (REP).

Le Conte's Sparrow

MC: 4, Mackinaw Bluffs (Woodford Co), 25 Oct (MJW); Prairie Green FP (Kane Co) (TB). **LD:** 14 Nov, PyramidL SP (Perry Co) (IOS); 25 Oct, Montrose (JT).

Nelson's Sparrow

EA: 19 Sep, Montrose (GAW); 23 Sep (2), MidSav (EWW). **MC:** 7, Springbrook Pra FP (DuPage Co), 8 Oct (ABe). **LD:** 31 Oct (2), IBSP (EWW); 25 Oct (2), Montrose (GAW).

Fox Sparrow

MC: 75, Mackinaw Bluffs (Woodford Co), 31 Oct (MJW). **Others:** Schistacea race: 7 Nov, Highland Park (Lake Co) (DRD*).

Song Sparrow

MC: 29, HennepinL, 27 Nov (DFS).

Lincoln's Sparrow

EA: 30 Aug, Montrose (WSS). **MC:** 15, Northerly I (Chi), 27 Oct (KKM). **LD:** 19 Nov (2), Grant Pk (Chi) (DEW).

Swamp Sparrow

MC: 47, Montrose, 25 Oct (GAW); 45, Springbrook Pra FP (DuPage Co), 6 Oct (ABe); 30, CarlL-C, 11 Oct (DMK, MSS).

White-throated Sparrow

EA: 5 Aug, Jarvis (MMC), summering?; 13 Sep, IBSP (WSG, IAS). **MC:** 250, Evanston (Cook Co), 20 Oct (JT); 250, Mackinaw Bluffs (Woodford Co), 31 Oct (MJW).

Harris's Sparrow

EA: 24-25 Oct, Montrose (KMM, AFS, APS); 25-28 Oct, Fermi (UWG, REF, et al.); 26 Oct, Evanston (Cook Co) (MMC); 27 Oct, Burnham Pk (Chi) (BW); 27 Oct, Northerly I (Chi) (KMM); 29 Oct, *Kankakee* (JHH:ph). **LD:** 26-29 Nov, *Clinton* (DMK, MSS).

White-crowned Sparrow

EA: 19 Sep, Ryerson CA (Lake Co) (ABt); 29 Sep, *Kankakee* (JHH). MC: 120, Jarvis, 3 Oct (GAW); 100, Mackinaw Bluffs (Woodford Co), 31 Oct (MJW); 85, Miller Meadows FP (Cook Co), 28 Oct (GN); 40, CarlL-C. 29 Nov (DMK, MSS).

Dark-eyed Junco

EA: 27 Sep, Grant Pk (Chi) (CBT). MC: 125, Miller Meadows FP (Cook Co), 28 Oct (GN); 110, Lincoln Pk (Chi), 10 Oct (GAW); 97, Calumet Pk (Chi), 20 Oct (WJM); 94, Geneseo (Henry Co), 29 Nov (SH); 49, ClintonL, 23 Nov (MEF); 40, CarlL-C, 28-9 Nov (DMK, MSS).

Summer Tanager

EA: 23 Aug, Salt Creek Wds NP (Cook Co) (DFS). MC: 5, Heron Pond (LCal), 30 Aug (CC); 2, *Putnam*, 2 Oct (MJB). LD: 23 Oct, *Sangamon* (HDB); 12 Oct, CarlL-C (DMK); 3 Oct, LShel (TAM, KAM, CLH, et al.); 17 Sep, StarvedRock (JDM, CKM).

Scarlet Tanager

MC: 8, Bloomington (McLean Co), 24 Sep (MEF). LD: 6 Oct, Horner Pk (Chi) (KKM); 4 Oct, Rckfd (DTW); 4 Oct, Mackinaw Bluffs (Woodford Co)(MJW); 2 Oct, Shabbonal (DeKalb Co) (MJB).

Northern Cardinal

MC: 36, HennepinL, 27 Nov (DFS); 30, Kenyon NP (Woodford Co), 5 Sep (MJW).

Rose-breasted Grosbeak

EA: 26 Jul, Montrose (MMC). MC: 26, *Kankakee*, 16 Sep (JHH); 21, HennepinL, 26 Sep (TH), 14, Evanston (Cook Co), 15 Sep (MMC); 12, Bloomington (McLean Co), 24 Sep (MEF). LD: 25 Oct, Montrose (KH); 17 Oct, Lyons Wds FP (Lake Co) (EWW).

Blue Grosbeak

MC: 5, CarlL-C, 23 Aug (DMK). LD: 28 Sep, *Sangamon* (HDB); 16 Sep, *Shelby* (MSS).

Indigo Bunting

MC: 44, *Ogle*, 4 Aug (DFS); 40, BigL (Brown Co), 8 Aug (KAM); 30, CarlL-C, 15 Aug (DMK). LD: 31 Oct (2), Mackinaw Bluffs (Woodford Co) (MJW); 28 Oct, NoP (GAW, NPBW).

Dickcissel

MC: 20, CarlL-C, 1 Aug (DMK); 10, Emiquon, 15 Aug (JGW); 9, Rochelle (Ogle Co), 4 Aug (DFS). LD: 10 Oct, *Richland* (GS); 3 Oct, LShel (TAM, KAM, CAT, et al.).

Bobolink

EA: 9 Aug (2), LCal (WJM, ENSBC). MC: 170, RollinsSav, 8 Aug (EWW); 120, BigL (Brown Co), 9 Aug (KAM); 40, CarlL-C, 12, 26 Sep (DMK, MSS). LD: 28 Oct, Lechter Basin Preserve (Woodford Co) (TH); 15 Oct, *Sangamon* (HDB).

Red-winged Blackbird

MC: 3750, w. *Grundy*, 28 Nov (DFS); 1200, *Kankakee*, 22 Nov (JHH); 800, CarlL-C, 26 Sep (DMK, MSS).

Eastern Meadowlark

MC: 72, *Jasper*, 24 Nov (RES).

Western Meadowlark

MC: 4, *Winnebago/Ogle*, 2 Aug (DTW). LD: 12 Dec, Northerly I

(Chi) (JGo:ph); 8 Nov, WinthropH (EWW); 24 Oct, Momence sod farm (Kankakee Co) (JHH).

Yellow-headed Blackbird

EA: 14 Jul (juv ♂), Montrose (RDH).

Rusty Blackbird

EA: 30 Sep, Douglas Pk (Chi) (EDG). MC: 500, Rockton (Winnebago Co), 20 Nov (LGB).

Brewer's Blackbird

EA: 29 Aug (3), *DeKalb* sod farm (DTW). MC: 165, Dunham Rd. sod farm (McHenry Co), 12 Sep (DBJ); 40, CarlL-C, 11 & 15 Nov, (DMK, MSS); 17, *DeKalb* sod farm, 15 Sep (DTW); 13, PRSNA, 9 Nov (CLH); 10, *Sangamon*, 30 Oct (HDB). LD: 29 Nov, *Madison* (MSS).

Common Grackle

MC: 15000, *LaSalle*, 15 Oct (CKM, JDM); 6500, *Kankakee*, 28 Oct (JHH); 5000, Poplar Grove (Boone Co), 23 Oct (DTW).

Brown-headed Cowbird

MC: 3000, LaSalleL, 6 Sep (JRRS); 1600, CarlL-C, 18 Oct (DMK, MSS); 1100, *Kankakee*, 13 Sep (JHH).

Orchard Oriole

EA: 22 Jul (2), Montrose (RDH); 31 Jul, Rainbow Beach (Chi) (DFS). MC: 6 (single flock), *Sangamon*, 15 Aug (HDB); 5, CarlL-C, 9 Aug (DMK, MSS); 4, Rckfd, 1 Aug (DTW). LD: 5 Sep, *Grundy* (DFS).

Baltimore Oriole

MC: 12, CarlL-C, 29 Aug (DMK, MSS). LD: 16 Sep, O'Fallon (St. Clair Co) (GH); 14 Sep, *Kankakee* (JHH); 14 Sep, Evanston (Cook Co) (MMC); 14 Sep, Beaubien Wds FP (Cook Co) (DFS).

Purple Finch

EA: 12 Aug, Beaubien Wds FP (Cook Co) (DFS); 12 Sep, Montrose (GAW). MC: 34, Sandy Crk (Marshall Co), 13 Nov (DFS); 12, *Kankakee*, 2 Nov (JHH).

House Finch

MC: 100, Joliet (Will Co), 25 Sep (JV); 45, Montrose, 19 Sep (JRRS); 35, WhalonL FP (DuPage Co), 1 Oct (ABe); 24, *Kankakee*, 15 Sep (JHH).

Red Crossbill

29 Nov (flyover), Saganashkee Sl (Cook Co) (DFS).

Pine Siskin

EA: 24 Oct, *Sangamon* (HDB); 27 Oct, *Rock Island* (SH); 12 Nov, Montrose (RDH). MC: 12, MArb, 22 Nov (DFS); 5, Ottawa (LaSalle Co), 19 Nov (JDM). Few reports.

American Goldfinch

MC: 150, CBG, 4 Sep (REP); 125+, CarlL, 12 Oct (KAM); 108, WolfRoad Pra (Cook Co), 6 Sep (DFS); 100+, IBSP, 31 Oct (EWW, APS); 100, Kenyon NP (Woodford Co), 5 Sep, 3 Oct (MJW); 85, Lib CA (Boone Co) 7 Oct (DTW).

House Sparrow

MC: 1200, CarlL-C, 24 Oct & 8 Nov (DMK, MSS); 150, CBG, 4 Sep (REP); 110, *Kankakee*, 15 Nov (JHH).

Eurasian Tree Sparrow

MC: 68, *Warren*, 5 Sep (CAT, TLK); 40+, TwoRivers, 16 Aug (EWW, WSS). Others: 16-25 Oct, *Champaign* (DLT, GSL); 28 Nov, CarlL-C (DMK:ph, MSS)-- 4th county record.

EXOTICS**European Goldfinch**

MC: 5, Wauk, 13 Aug (JRRS).

— Douglas F. Stotz,

Senior Conservation Ecologist

Field Museum of Natural History

1400 S. Lake Shore Drive, Chicago, IL 60605

dstotz@fieldmuseum.org

Support Meadowlark

Business Card Size Ads ~ only \$15

The Illinois Ornithological Society accepts pertinent ads for publishing in Meadowlark.

Due dates: No. 1 - Summer: February 1; No. 2 - Fall: May 1; No. 3 - Winter: August 1; No. 4 - Spring: November 1

Required materials: Camera-ready copy and check payable to IOS should be sent to:

Sheryl De Vore, 967 Braeburn Road, Mundelein, IL 60060.



Send Seasonal Reports to:

Winter Field Notes

Due by **7 March** (1 Dec through 28 Feb)

Send to: Kelly McKay

420 First Ave., PO Box 452, Hampton, IL 61256-0452

E-mail: KellyJMckay@aol.com

Spring Field Notes

Due by **7 June** (1 Mar through 31 May)

Send to: Geoffrey Williamson

4046 N. Clark St., Chicago, IL 60613

E-mail: geoffrey.williamson@comcast.net

Breeding Season Field Notes

Due by **7 August** (1 June through 31 July)

Send to: Steven D. Bailey

967 Braeburn Road, Mundelein, IL 60060

E-mail: sdbailey@mail.inhs.uiuc.edu

Fall Season Field Notes

Due by **7 December** (1 Aug through 30 Nov)

Send to: Douglas Stotz

Conservation Ecologist/Ornithologist
Environmental and Conservation Programs

Field Museum of Natural History

1400 S. Lake Shore Drive, Chicago, IL 60605

Email address: dstotz@fieldmuseum.org

Submission Information

✔ We welcome manuscripts, photographs, and illustrations for possible publication in Meadowlark.

✔ Article topics include unusual bird sightings and nesting accounts, technical papers on bird research, and other articles such as bird finding guides and field identification tips. Joy of birding articles will be considered.

✔ Manuscripts should be typewritten or computer-generated, double spaced and on only one side of numbered pages. Please send two copies of your manuscript and make sure you keep another for yourself.

✔ We require a computer disc in Word or Word Perfect or an electronic file.

✔ We prefer clear black and white or color print photographs. Digital or electronic files (200-300 dpi.) are also acceptable.

✔ Include name, address, and day and night time phone numbers. Other pertinent information about your qualifications and background is also helpful.

✔ We reserve the right to review and edit articles according to style, grammar, accuracy, and readability.

Send articles, photographs, illustrations & inquiries to:

Sheryl De Vore, Chief Editor

967 Braeburn, Mundelein, IL 60060

e-mail address: sheryl.devore@comcast.net

Prints (etchings & woodcuts)
Drawings & Collages
Notecards
Sketchbook Pages
Book Illustrations
The Birds of Northern Illinois
The Birds of Oregon
The Birds of Costa Rica
The Birds of Trinidad

Peter Olson polson@niu.edu
www.peterolsonbirds.com

DUCK STAMPS (1934-2008)
The Best Prices - The Best Quality

◦ Duck Stamps ◦
plus sheetlets of special issue, U.S. flora and fauna stamps and most U.S. souvenir sheets

Vernon Kleen 1825 Clearview Drive
217-787-3515 Springfield, IL 62704

Email: vkleen@comcast.net

The Best Prices - The Best Quality

10th Anniversary of the



Birding Blitz

of
Southernmost Illinois

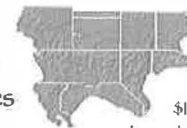
Get in on the

Ultimate Illinois Birding Challenge

24 Hours

11 Counties,

5 Categories



\$25 per team member,
2 member minimum

\$10 per student member

\$100 in pledges required per
team toward habitat preservation
in the Cache River Watershed

Saturday, April 30th, 2011

Awards Brunch on Sunday, May 1st

For details or to register, visit

<http://www.birdingblitz.org>

Win, lose, or draw,
you'll have a great time birding!!



Nelson's Sparrow.

Springbrook Prairie, DuPage County, 7 October 2009.

Photo by Brian Tang.